

Lethbridge
SCHOOL DIVISION

West Coulee Station Elementary School



About our school

West Coulee Station Elementary School is Lethbridge School Division's newest K-5 school on the westside of The City of Lethbridge.

Capacity 900 students

Size 6,000 square metres



Project Timeline

How we arrived here today!

Spring, 2021

Project approval

A school in the north end of west Lethbridge was requested to meet facility capacity needs since 2008, as per the Division's Three-Year Capital Plan

Summer, 2023

School construction

The Government of Alberta contracted design-build team Ward Bros. Construction Ltd. to construct the school, while FWBA Architects led the design team



Sept. 22, 2023

Site ceremony

The Division hosted a site ceremony, with all of its partners, to mark the start of construction on the new school.

April, 2022

Site work

Work on the site at the school began for utilities, road realignment and widening and levelling of the building location and playing fields.

November, 2023

Naming process

Members of the public had the opportunity to submit suggestions for names. A School Naming Committee was formed and ultimately, West Coulee Station was selected.



Project Timeline

How we arrived here today!

April 29, 2024

Principal selected

The administrative team for West Coulee is selected, with Dean Hawkins as principal. Later in the school year, in of January of 2025, Aimee Dewacht is selected vice-principal.

November, 2024

Before and After School Care

It is announced The YMCA will be the operator of the Before and After School Care Program at West Coulee when the school opens in September of 2025.

October, 2024

Boundaries approved

The Division's Board of Trustees approved the westside elementary boundary changes for the 2025/2026 school year, to coincide with the opening of West Coulee.

August, 2025

School set up

West Coulee Elementary School staff gain access to the building to begin preparations for 2025/2026.

November, 2024

Spanish Bilingual

It is announced the Lethbridge School Division's Spanish Bilingual Program will move to West Coulee Station, commencing for 2025/2026.

September, 2025

Students arrive!

On Sept. 2, students were welcomed into the school as the school year officially began.



The Interior

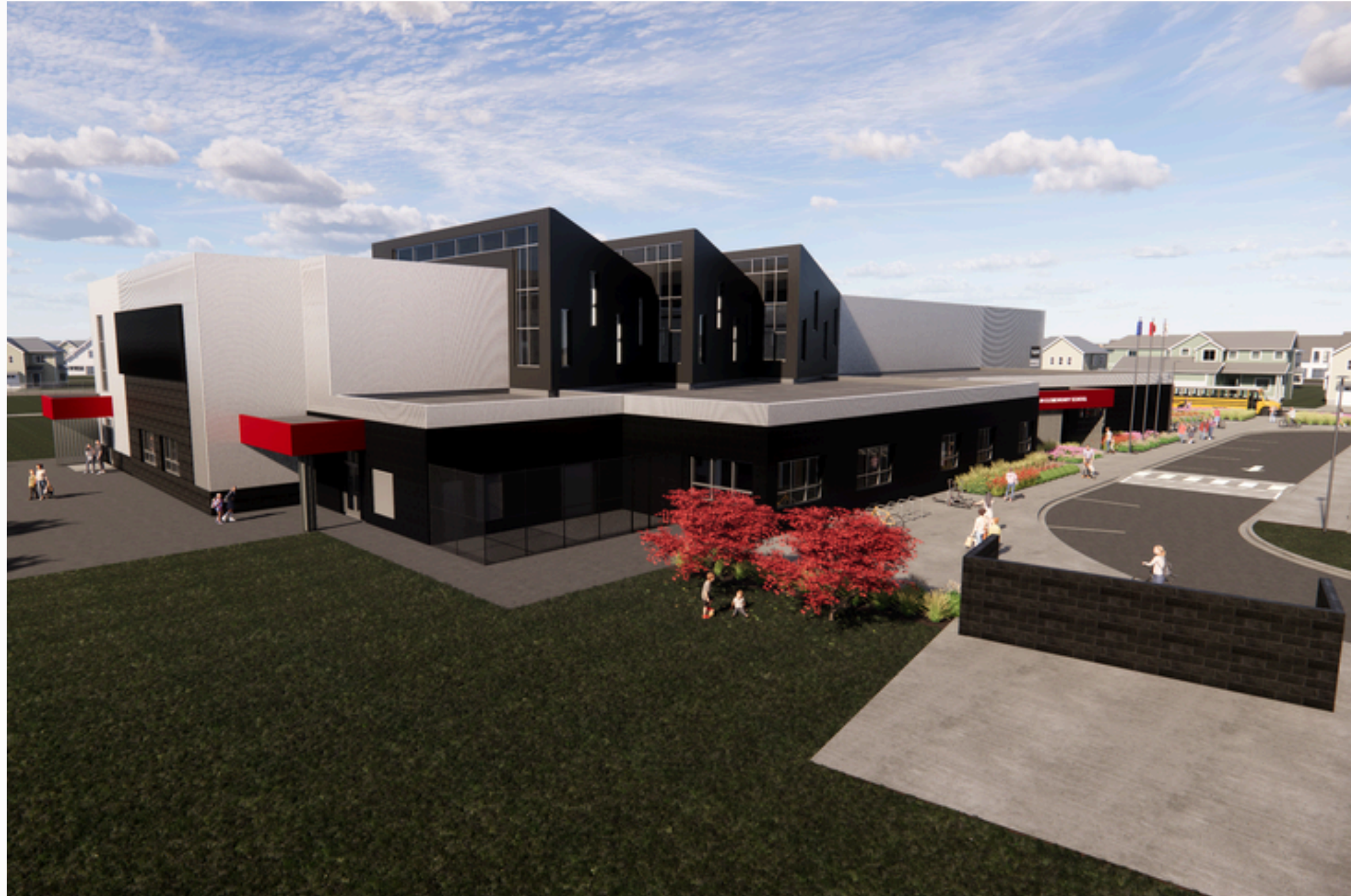
From the beginning, West Coulee Station Elementary School was meant to incorporate some unique concepts, such as the grand theatre staircase to the Learning Commons and an enlarged gymnasium, made possible through support from The City of Lethbridge





The Design

West Coulee is the Division's first two-story elementary build since the 1950s, when Senator Buchanan and Westminster elementary schools were constructed.



The exterior features elements that are based on an industrial steam engine



In a nutshell

Where?



The school is located at 1350 Abitibi Road West, in the centre of the Garry Station neighbourhood in the north section of west Lethbridge.

Specs



The school will feature a 6,000 square metre structure, built for 900 students, when modulars are added. When opened, the school will house approximately 600 students. It has been designed to take on 12 modular classrooms, some of which will be of the two-story variety.

Features



West Coulee students will enjoy a large gymnasium, thanks to support from The City of Lethbridge, which provided additional funding to upsize the gym. West Coulee's large staircase leading from the gathering space to the Learning Commons will provide a space for multiple functions and student gatherings.



Sod turning

In September of 2023, work began on the site



The footings are installed and excavation begins



Construction progress

October, 2023



Foundations are completed
and the concrete blocks
stairwells are prepared





Construction progress

December, 2023



Stairwells are completed
and power and mechanical
services begin





Construction progress

January, 2024



Concrete load-bearing walls are tilted to avoid winter construction slowdown



Construction progress

March, 2024



Structural steel framing of the classrooms goes up quickly!



Construction progress

April, 2024



Steel roof sheeting and insulated sheet roofing goes on



Construction progress

May, 2024



Infill wall construction begins to enclose the building



Construction progress

September, 2024



The structure continues to progress rapidly, as those passing by the site begin to see how the finished school will take shape



Construction progress

November, 2024



As winter sets in, interior work continues to progress



Construction progress

January, 2025



Work continues on the school, even throughout the cold winter months!



Construction progress

April, 2025



As the weather warms,
construction crews
ramp up their efforts
on the inside and the outside



Construction progress

May, 2025



Work progresses rapidly with three months to go!



Construction progress

June, 2025



Near completion!





Construction progress

August, 2025



Completion!





West Coulee

Lethbridge School Division's newest elementary school!





West Coulee

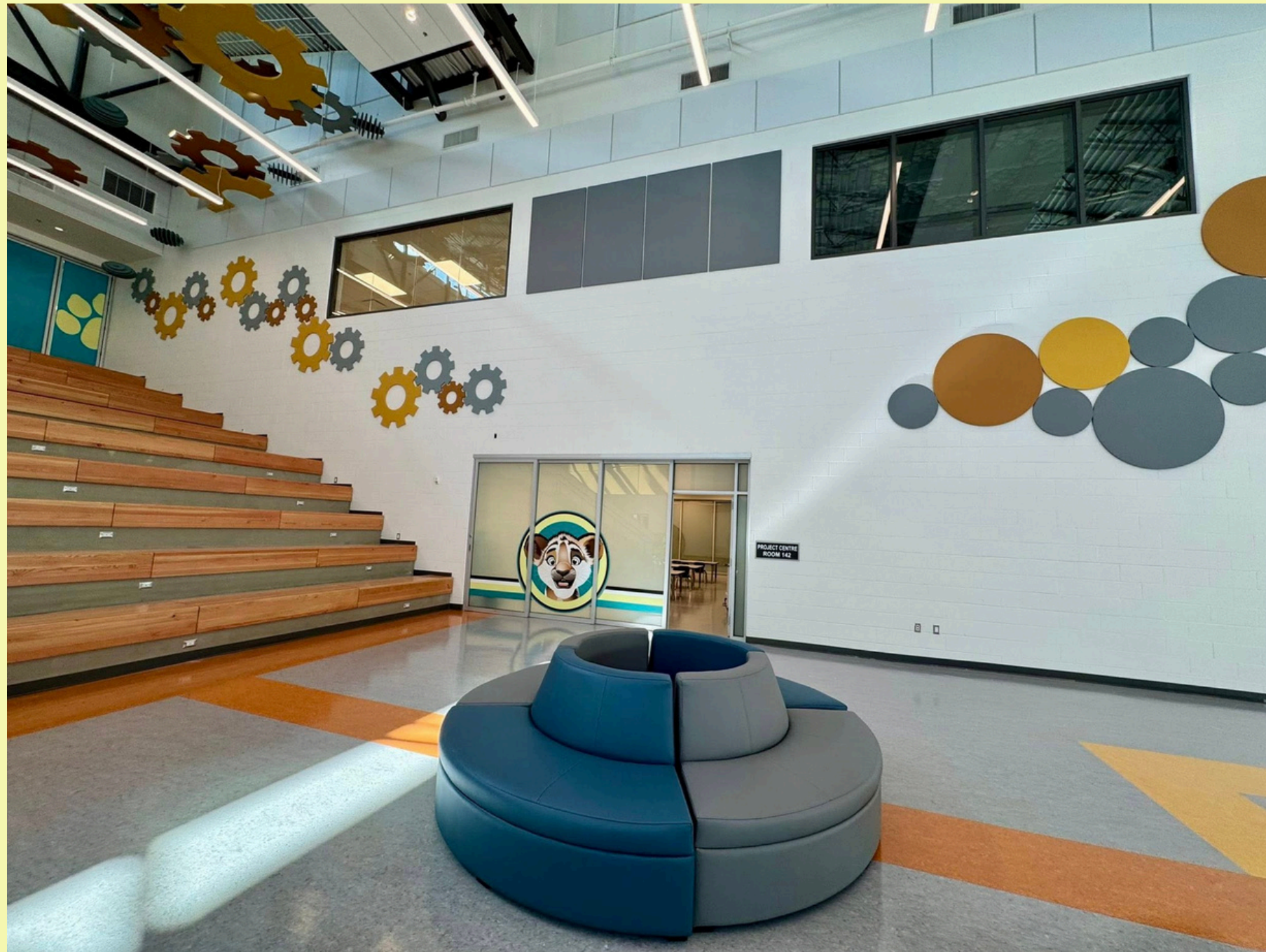
Lethbridge School Division's newest elementary school!





West Coulee

Lethbridge School Division's newest elementary school!





West Coulee

Lethbridge School Division's newest elementary school!





West Coulee

Lethbridge School Division's newest elementary school!

