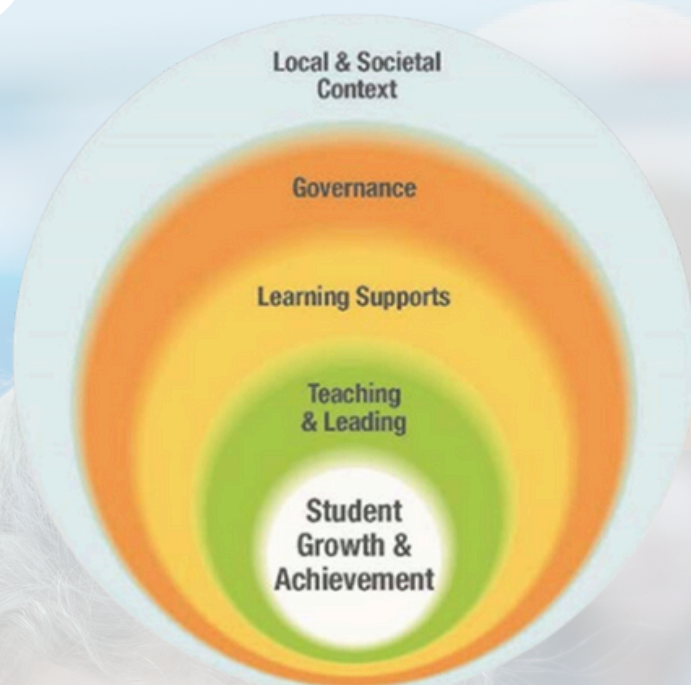


ASSURANCE PLAN SUMMARY



Vision:

Learners are innovative thinkers who are successful, confident, respectful, and caring.

Mission:

Lethbridge School Division is inclusive, forward thinking, and accountable for engaging students in quality learning experiences that develop strong foundations, innovative minds, and responsible citizens.

Domain: Local and Societal Context

The Local and Societal Context Domain is designed to identify and respond to the learning needs, interests, aspirations and diverse cultural, social, and economic circumstances present in Lethbridge School Division.

Strategic Priorities and Areas of Interest

- Improve Alberta Education Assurance Framework Results
- Improve Data Collection to Support Student Learning
- Increase Kindergarten and Grade 1 Enrollment
- Conduct a Review of Grade 6 to 9 Education in the Division

Domain: Governance

Governance refers to the processes by which policy leaders attend to local and societal context, determine strategic direction, evaluate policy implementation and manage fiscal resources to ensure learning supports, quality teaching and leading and optimum learning for all.

Governance Domain Priorities

- Stakeholder Engagement
- Advocacy for Education
- Resource Allocation
- Effective Policy

Domain: Student Growth and Achievement

Student Growth and Achievement refers to the ongoing progress students make in their learning, relative to identified provincial learning outcomes and consistent with their needs, interests and aspirations.

Domain Priorities

- Foundational Learning
- Diverse Learning Pathways
- Effective Assessment
- Indigenous Student Achievement

Domain: Teaching and Leading

Teaching and Leading refers to teachers and leaders analyzing the learning context, attending to local and societal considerations and applying the appropriate knowledge and abilities to make decisions resulting in quality teaching, leading and optimum learning for all.

Domain Priorities

- Respond Effectively to Student Needs
- Professional Growth
- Communication and Collaboration

Domain: Learning Supports

Learning Supports refers to the mobilization of resources (including expertise, facilities, human and community services) required to demonstrate shared, system-wide responsibility for all children and students and the application of these resources to ensure quality teaching and leading and optimum learning for all.

Domain Priorities

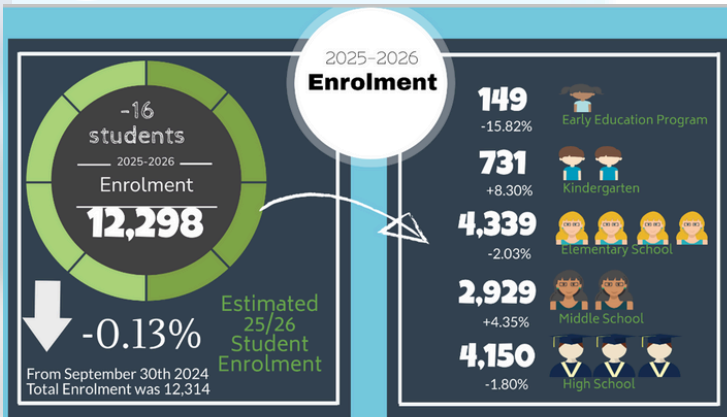
- Safe and Caring Culture
- Equitable Learning Opportunities
- Active, Healthy Students
- Truth and Reconciliation

Town Hall 2025



2025
2026

ASSURANCE PLAN SUMMARY



Division Priorities:

- Growing Learning and Achievement
- Leading Learning and Capacity Building
- Supporting Learning and Well-Being

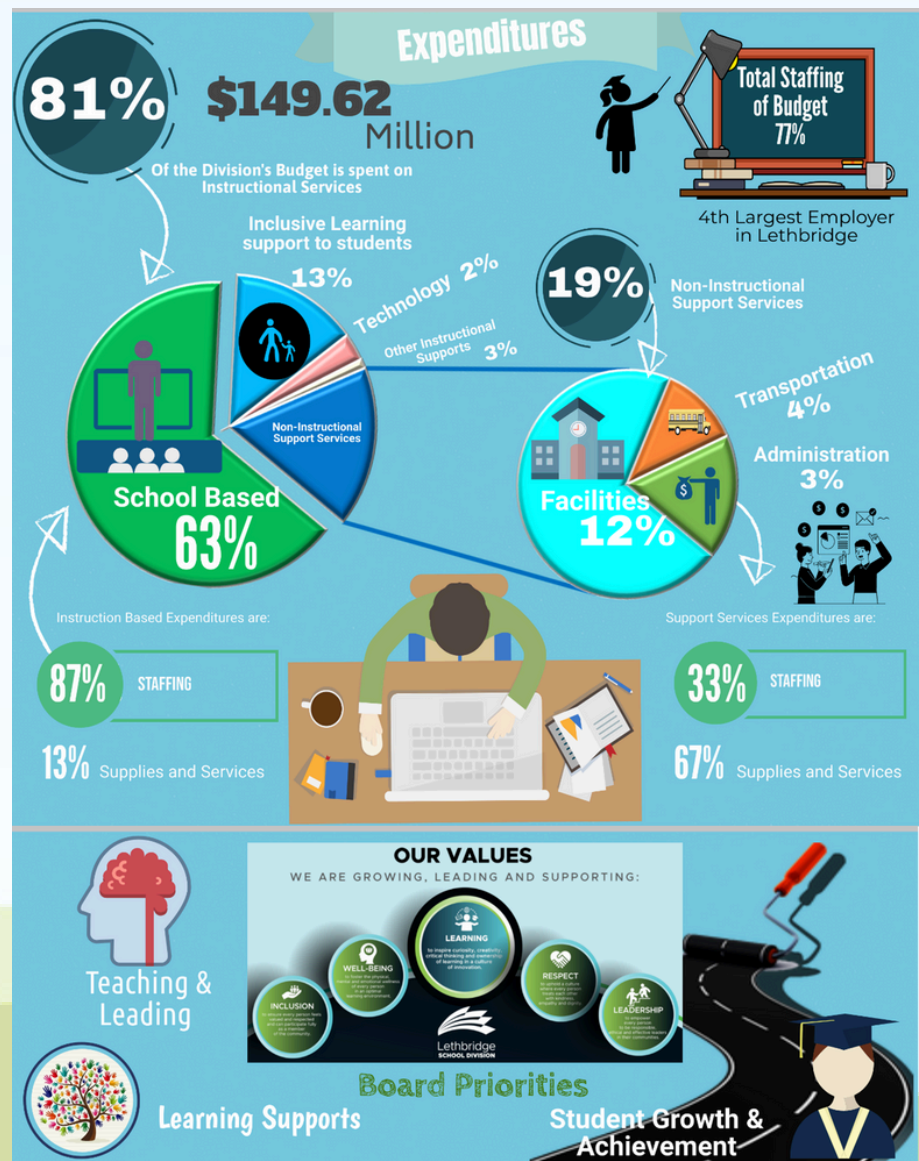
About the Division

Since 1886, Lethbridge School Division has offered high quality learning experiences over a broad range of programs to meet the needs of a wide variety of learners. The Division educates approximately 12,500 Early Learning through Grade 12 students within the city of Lethbridge and employs approximately 668 full time equivalent (FTE) certificated staff and approximately 554 FTE support staff.

All schools provide instruction in the core subjects (Language Arts, Mathematics, Social Studies and Science), Physical Education and the Fine Arts. Students at each school have access to Learning Commons that provide a blend of print materials and access to state-of-the-art computers as well as digital resources.

The Division continues to enhance inclusive practices to provide all students with the most appropriate learning environments and opportunity to achieve their potential.

Traditionally, strong co-curricular and extra-curricular programs include a variety of athletic, fine arts and student leadership opportunities.



FIND A LINK TO THE FULL ASSURANCE PLAN HERE: [ASSURANCE](#)

A LINK TO THE FINANCIAL AND PRERFORMANCE MEASURES DASHBOARDS CAN BE FOUND HERE: [DASHBOARDS](#)