

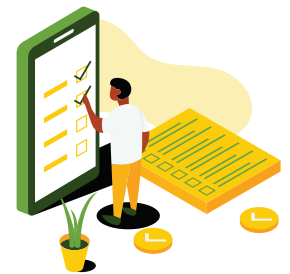
# COMMUNITY ENGAGEMENT



## WEST LETHBRIDGE ELEMENTARY SCHOOL PROPOSED BOUNDARY CHANGES SURVEY

Respondents  
**97**

**SURVEY  
RESULTS**



On September 24th, 2024, the School Boundary Realignment Committee presented suggested boundary adjustments for West Lethbridge Elementary Schools, set to take effect in the 2025-2026 school year. After the presentation, a survey was made available on the Division's website to gather feedback and address any questions from the community regarding the proposed changes. A summary of the survey results can be found on the following pages.

### A brief summary of the recommendations:



### Next Steps

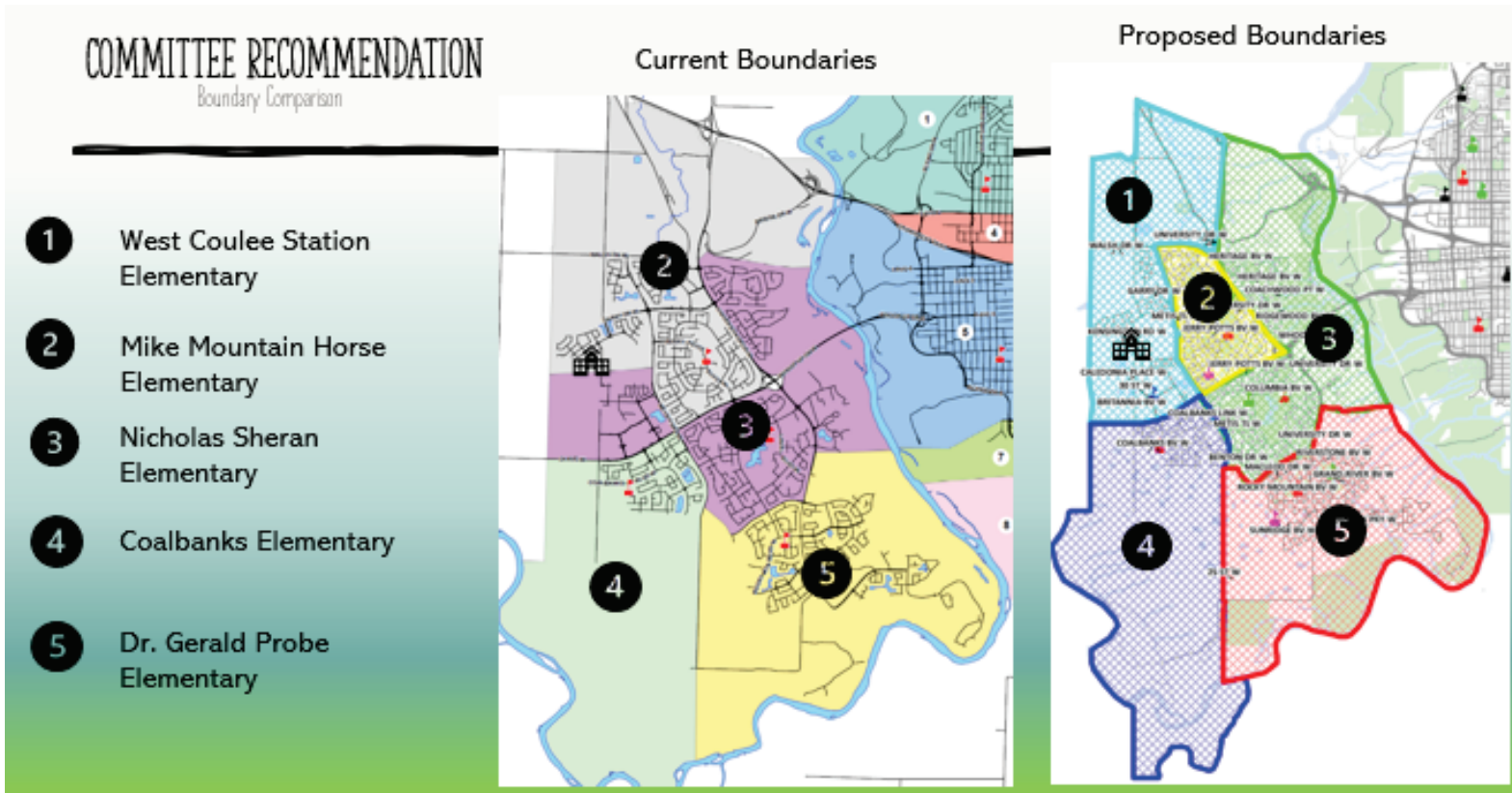
Special meeting  
scheduled for October  
29th to approve new  
boundaries.

The School Boundary Alignment Committee recommends the following changes based on community feedback and the outlined principles:

1. Approval of the new boundaries under **Option 3**, which includes relocating the Spanish Bilingual Program to West Coulee Station Elementary School for the 2025-2026 school year.
2. Provide a **transportation solution** for eligible students in the Spanish Bilingual Program.
3. **Exemption Option:** Allowing grade 4 students from Mike Mountain Horse and Nicholas Sheran Elementary Schools in the 2024-2025 school year to choose to remain at their current school for the 2025-2026 academic year for grade 5.

# WEST LETHBRIDGE ELEMENTARY SCHOOL PROPOSED BOUNDARY CHANGES SURVEY

## Boundary Maps, Before and After Committee Recommendations

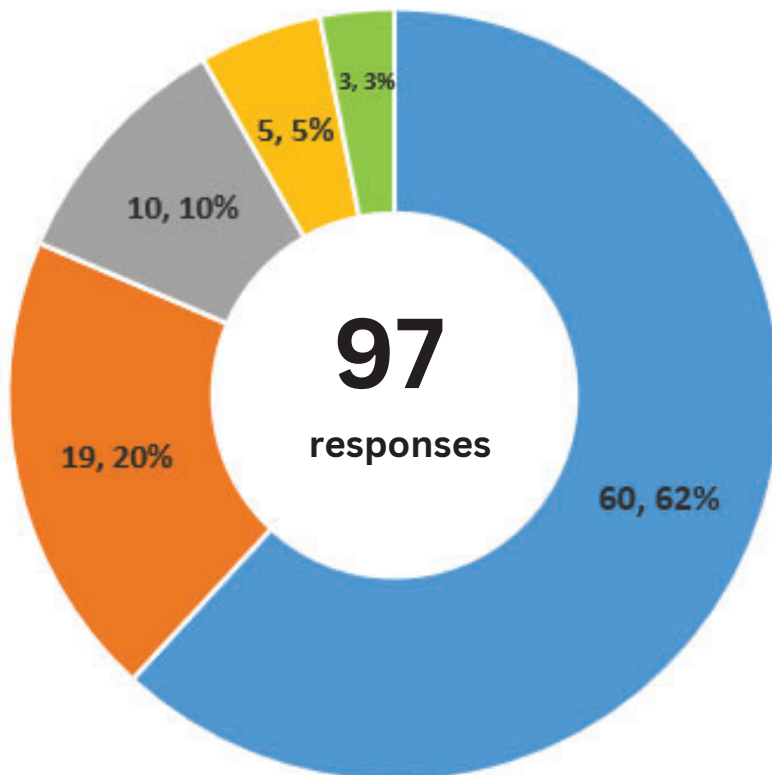




# WEST LETHBRIDGE ELEMENTARY SCHOOL PROPOSED BOUNDARY CHANGES SURVEY

**We Asked:** I am...

**You Answered:**



I am

- A parent/guardian/staff member of Coalbanks Elementary School
- A parent/guardian/staff member of Nicholas Sheran Elementary School
- A parent/guardian/staff member of Mike Mountain Horse Elementary School
- A parent/guardian/staff member of Dr. Probe Elementary School
- Interested community member



# WEST LETHBRIDGE ELEMENTARY SCHOOL PROPOSED BOUNDARY CHANGES SURVEY

## We Asked:

After reviewing the information package " Proposed Boundary Changes for West Lethbridge Elementary Schools", are there any questions or concerns that were not addressed in the FAQ section of the document?

## You Answered:

**45** with no comment provided or nothing to add



## Questions:

1. Has the YMCA BASC program been consulted for before and after school care, and will they offer bussing to the new school? Will families lose their current care spots?
2. Will there be a BLAST program at the new West Coulee School?
3. Why was the Spanish program relocated instead of placing boundary limits? Why not expand Spanish to more schools, like French?
4. Will students in the Coalbanks' Spanish Bilingual Program be able to finish their years there? Will Grade 5 students be allowed to complete their final year at Coalbanks?
5. Why can't the Spanish program remain at Coalbanks for children in Copperwood?
6. Will parents have to pay for bussing to the Spanish program, and what are the boundaries for eligible students? What about drop-off/pick-up lanes at Garry Station?
7. Were transiency rates or socioeconomic factors considered in these decisions?
8. Is there a plan to complete road access to the new Coulee Station school from Whoop Up Drive?
9. When is another school expected to be built to accommodate future growth at Copperwood?



## Concerns expressed:

### 1. Staffing and Program Continuity:

- a. Concern about the teaching staff at the new school being all brand new.
- b. General concerns about staffing and continuity for students transitioning between schools or programs.

### 2. Sibling and Student Placement:

- a. Concern about siblings staying together if one is in Grade 5 and another is starting Grade 1.

### 3. Spanish Program Relocation:

- a. Concern about whether students will switch to English instead of relocating with the Spanish program, especially if parents do not plan to continue in the program after the move.
- b. Concerns about the impact of moving the program on enrollment, including potential challenges with recruiting new students and limiting access beyond Grade 1.

### 4. Enrollment and Future Growth:

- a. Concerns about enrollment pressure and future growth at Mike Mountain Horse and Copperwood schools due to the relocation of the Spanish program.
- b. Concern about whether relocating the Spanish program will significantly change enrollment numbers at the schools involved.

### 5. Safety and Accessibility:

- a. Request for a safe pedestrian path along 30th Street for walking and biking to the new school.
- b. Concerns about road safety, accessibility, and transportation infrastructure, including recommended pedestrian paths and school transportation options.

# WEST LETHBRIDGE ELEMENTARY SCHOOL PROPOSED BOUNDARY CHANGES SURVEY

## We Asked:

Please provide feedback on the proposed new boundaries for West Lethbridge Elementary Schools, that would come into effect for the 2025-2026 school year.

## You Answered:

No feedback provided by **55** respondents



There were **26** comments provided that were supportive of the proposed boundary changes. Below is a summary of those comments:

- Many respondents expressed support for Option 3, believing it will be beneficial for students, schools, and overall enrollment balance.
- Multiple comments highlighted satisfaction with the relocation of the Spanish bilingual program, noting it would reduce overcrowding at Coalbanks and allow the program room to grow.
- Several individuals expressed gratitude for the planning process, commending the committee's work and decision-making.
- Support was shown for the proposed boundaries, with a few requesting the inclusion of safe walking/biking paths for students.
- A few noted specific approval of Dr. Probe's boundaries and appreciation for not splitting the Copperwood community.
- Overall, most comments indicated that the proposal was well-received, with respondents pleased that it addressed key concerns effectively.

## WEST LETHBRIDGE ELEMENTARY SCHOOL PROPOSED BOUNDARY CHANGES SURVEY

### We Asked:

Please provide feedback on the proposed new boundaries for West Lethbridge Elementary Schools, that would come into effect for the 2025-2026 school year.

### You Answered:



There were **16** comments provided that were not supportive of the proposed boundary changes. Below is a summary of those comments:

- Several individuals expressed disappointment with the decision to move the Spanish program from Coalbanks, where it is well-established and thriving. Many preferred it to remain at Coalbanks.
- Concerns were raised about dividing the Copperwood community, noting that 61% of Copperwood students are in the Spanish program, and the relocation will still split the community.
- Some felt that moving the Spanish program to West Coulee Station was not the best option, with preferences for Nicholas Sheran as the new location.
- Logistical challenges were mentioned, with parents worried about disruption to their children's education and community connections, particularly for those already attending Nicholas Sheran or living near the school.
- Some were concerned that moving the program will decrease enrollment in Spanish and fail to address overcrowding at Coalbanks, while also limiting growth of the Spanish program in the new location.
- There were also emotional reactions from parents sad or frustrated that their children won't attend the neighborhood school they can see from their homes.

***Most comments concern the relocation of the Spanish Bilingual Program.***