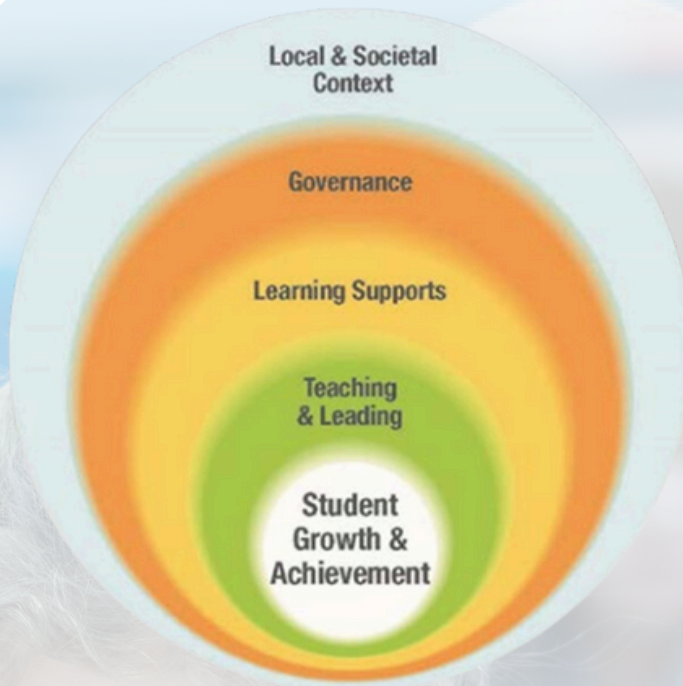


ASSURANCE PLAN SUMMARY



Vision:

Learners are innovative thinkers who are successful, confident, respectful, and caring.

Mission:

Lethbridge School Division is inclusive, forward thinking, and accountable for engaging students in quality learning experiences that develop strong foundations, innovative minds, and responsible citizens.

Domain: Local and Societal Context

Local and Societal Context refers to the engagement practices of schools and communities, with support from the broader system, in identifying and responding to the learning needs, interests, aspirations and diverse cultural, social and economic circumstances of all students.

Local and Societal Areas of Focus

- Division Performance Measures - Student Academic Achievement
- Successful Early Start for Students
- Indigenous Education
- Division Personal Device Guidelines
- Reporting of Student Progress
- Staff Wellness

Domain: Governance

Governance refers to the processes by which policy leaders attend to local and societal context; determine strategic direction; evaluate policy implementation; and manage fiscal resources to ensure learning supports, quality teaching and leading and optimum learning for all.

Governance Domain Priorities

- Stakeholder Engagement
- Advocacy for Education
- Resource Allocation
- Effective Policy

Domain: Student Growth and Achievement

Student Growth and Achievement refers to the ongoing progress students make in their learning, relative to identified provincial learning outcomes and consistent with their needs, interests and aspirations.

Domain Priorities

- Foundational Learning
- Diverse Learning Pathways
- Effective Assessment
- Indigenous Student Achievement

Domain: Teaching and Leading

Teaching and Leading refers to teachers and leaders analyzing the learning context; attending to local and societal considerations; and applying the appropriate knowledge and abilities to make decisions resulting in quality teaching, leading and optimum learning for all.

Domain Priorities

- Respond Effectively to Student Needs
- Professional Growth
- Communication and Collaboration

Domain: Learning Supports

Learning Supports refers to the mobilization of resources (including expertise, facilities, human and community services) required to demonstrate shared, system-wide responsibility for all children and students, and the application of these resources to ensure quality teaching and leading and optimum learning for all.

Domain Priorities

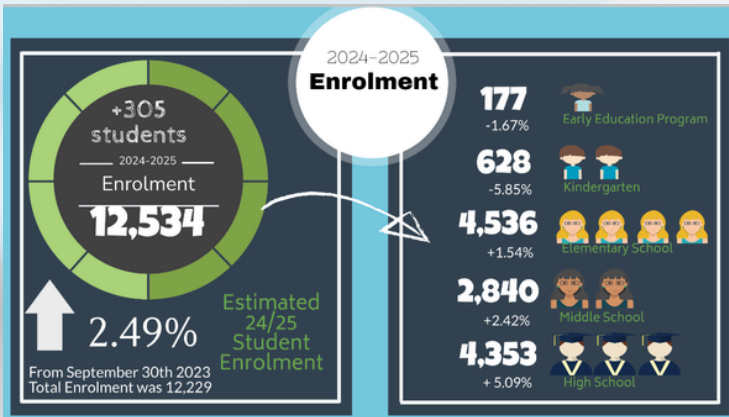
- Safe and Caring Culture
- Equitable Learning Opportunities
- Active, Healthy Students
- Truth and Reconciliation

Town Hall 2024



2024
2025

ASSURANCE PLAN SUMMARY



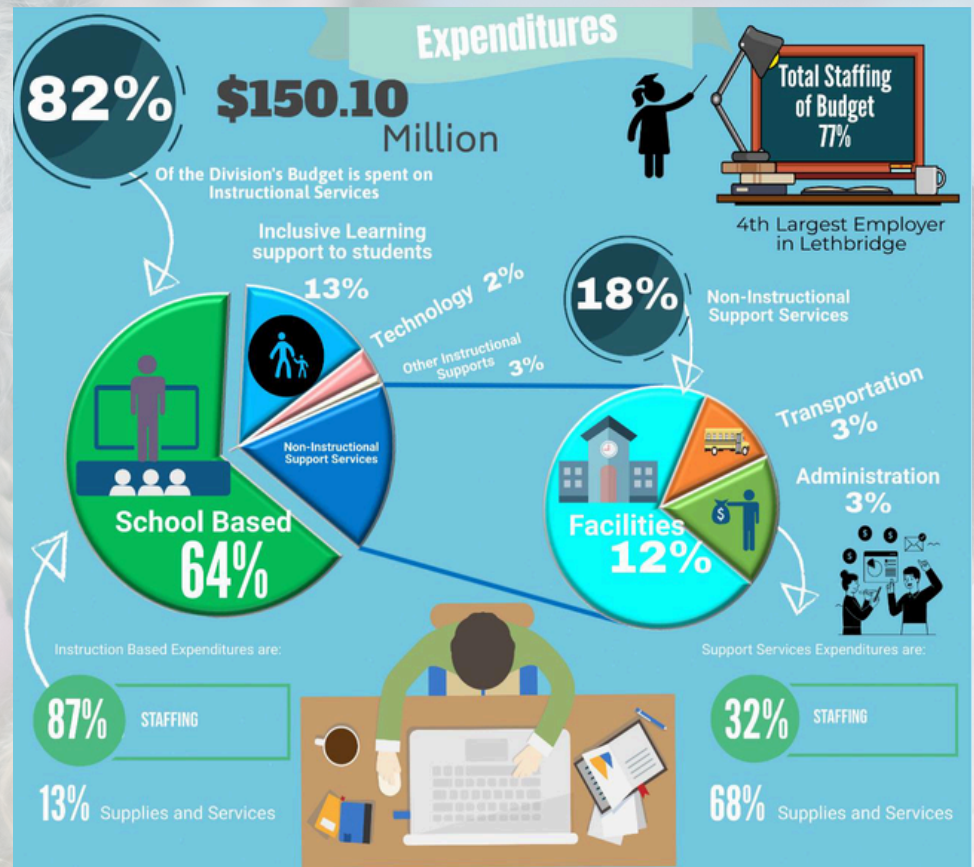
Division Priorities:

- Growing Learning and Achievement
- Leading Learning and Capacity Building
- Supporting Learning and Well-Being

About the Division

Since 1886, Lethbridge School Division has offered high quality learning experiences over a broad range of programs to meet the needs of a wide variety of learners. The Division educates approximately 12,400 early learning through Grade 12 students within the city of Lethbridge and employs approximately 640 full time equivalent (FTE) certificated staff and approximately 495 FTE support staff.

All schools provide instruction in the core subjects (language arts, mathematics, social studies, and science), physical education and the fine arts. Students at each school have access to Learning Commons that provide a blend of print materials and access to state-of-the-art computers as well as digital resources. French language instruction is offered in Grade 4 through Grade 12 and a French Immersion/French Bilingual program is available for students from Kindergarten through Grade 12. A Spanish Bilingual program is in place at Coalbanks Elementary School. It currently spans Kindergarten to Grade 5. G.S. Lakie Middle school also offers a Spanish Bilingual Program to grades 6, 7 and 8 students.



Budget Highlights

Total budgeted revenues and allocations for 2024/2025 are \$150.10 million. Included in these revenues is \$1,240,373 of prior year's reserves. Total revenues and allocations for the Division increased by 4.38% over the operating budget for 2023/2024.

FIND A LINK TO THE FULL ASSURANCE PLAN HERE: ASSURANCE
A LINK TO THE FINANCIAL AND PRERFORMANCE MEASURES DASHBOARDS CAN BE FOUND HERE: DASHBOARDS