

Priorities:

- Growing Learning and Achievement
- Leading Learning and Capacity Building
- Supporting Learning and Well-Being

Values:

Learning, Leadership
Inclusion, Respect
and Well-Being

Domain: Local and Societal Context

Lethbridge School Division works hard to respond to the needs of our students and local context. We are proud to have programs that address learning needs such as programs for English as an Additional Language Learners (EAL), Inclusive Education and Indigenous Education. Supporting the health and wellness of students and families is a priority, as demonstrated by a variety of health and wellness supports. Early Education programs provide expertise for optimal growth of our youngest. Curriculum and assessment expertise provided by Instructional Services serves staff and students well. We are a Division that celebrates our local diversity. We are a Division that stretches to bridge gaps that are an outcome of economic challenges for families.

Domain: Governance

The Board of Trustees is committed to implementing strategies that guide responsible use of resources and policies that direct sound decision making. Strategies in this domain also reflect Trustees belief in community engagement, collaboration with other authorities and the municipality and a cycle of continual improvement.

Domain: Growing Learners and Achievement

Strategies in this domain focus on meeting provincial learning outcomes and providing students with a strong foundation in literacy and numeracy. There are strategies that promote student application of knowledge and skills in real-life contexts and continue to build robust off-campus experiential opportunities for students. Strategies show attention to assessment and the importance of student learning goals. They also demonstrate our commitment to advancing reconciliation and staff and student application of Indigenous Ways of Knowing.

Domain: Leading Learning and Building Capacity

Strategies in this domain show a continued commitment to the development of quality staff who can respond with skill and competence to the learning needs of students. Strategies outline opportunities for ongoing learning and capacity building of staff and opportunities for collaboration. As well, there is a commitment to effective communication, evidence-based learning and staff well-being.

Domain: Supporting Learning and Well-Being

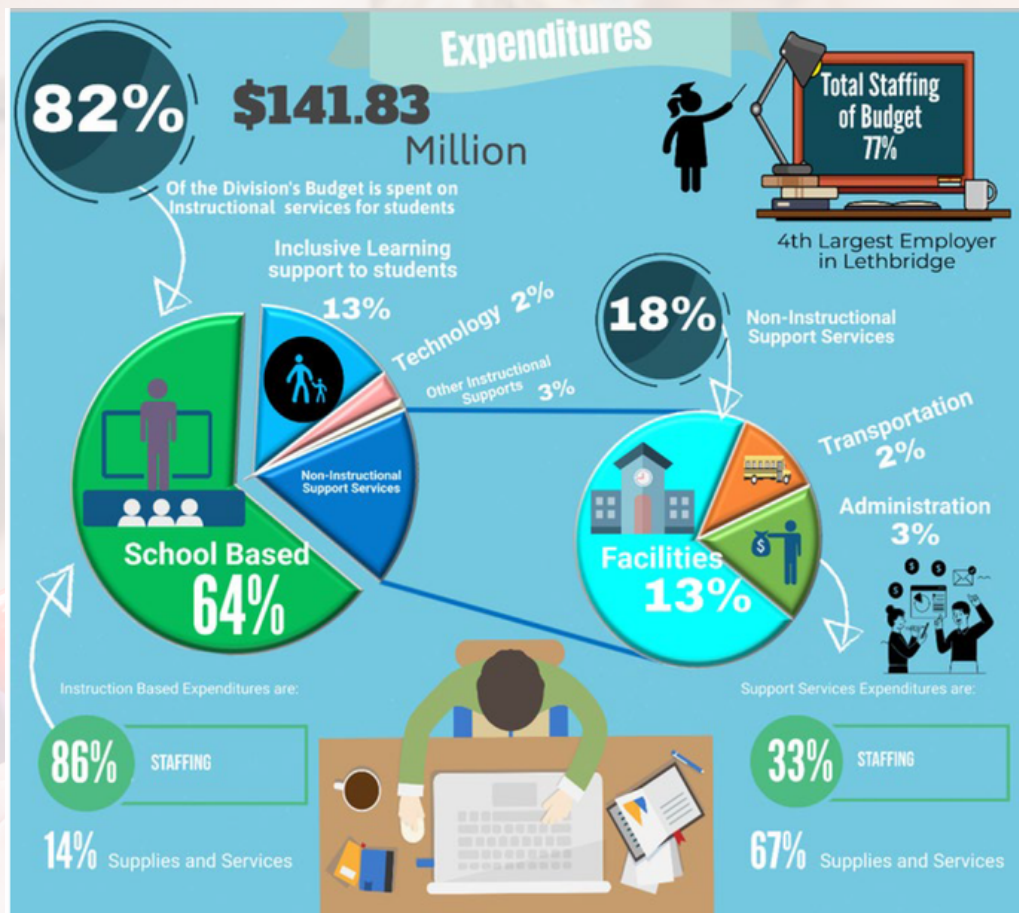
Strategies in this domain are centred on environments that are welcoming, safe, caring, respectful and inclusive. They illustrate commitment to meeting the needs of all learners and placing high standards as part of everything we do. Strategies also outline action for supporting the goal of students being active, healthy and well. Finally, there are strategies that keep the Division focused on quality infrastructure, including planning for growth and technology, to meet the learning needs of our students.

About the Division

Since 1886, Lethbridge School Division has offered high quality learning experiences over a broad range of programs to meet the needs of a wide variety of learners. The Division educates approximately 11,957 early learning through Grade 12 students within The City of Lethbridge and employs approximately 683 full time equivalent (FTE) certificated staff and approximately 552 FTE support staff.

All schools provide instruction in the core subjects (Language Arts, Mathematics, Social Studies and Science), Physical Education and the Fine Arts. Students at each school have access to Learning Commons that provide a blend of print materials and access to state-of-the-art computers as well as digital resources. French language instruction is offered in Grade 4 through Grade 12 and a French Immersion/French Bilingual program is available for students from Kindergarten through Grade 12. A Spanish Bilingual program is in place at Coalbanks Elementary School and G.S. Lakie Middle School. It will span Kindergarten to Grade 7.

The school division piloted an e-Learning Program for the 2021/2022 school year, and continued with the program for the 2022/2023 school year for Grade 1 to Grade 8.



Budget Highlights

- Lethbridge School Division has a total operating budget of \$141.83 million.
- There will be an increase of 3.5 FTE teaching staff from the prior year
 - There will be decrease of 19.75 FTE support staff from the prior year due to a decrease in projected PUF students
 - Total budgeted revenues for 2023/2024 are \$141.83 million. Included in these revenues is \$798,399 of prior year's reserves.

FIND A LINK TO THE FULL ASSURANCE PLAN HERE: [ASSURANCE](#)

A LINK TO THE FINANCIAL AND PERFORMANCE MEASURES DASHBOARDS CAN BE FOUND HERE: [DASHBOARDS](#)