

LETHBRIDGE SCHOOL DIVISION

E-LEARNING



***Dr. Robert Plaxton Elementary School
Senator Joyce Fairbairn Middle School***

2023/2024 School Year: Grade 1-9

There will be an application process with limitations on the number of students accepted into the program.

Considerations for acceptance into the program includes students across Lethbridge School Division, as well as students who reside elsewhere in Alberta, along with confirmation of technology requirements to participate fully in the program, as outlined in the application, as well as the commitment to adhere to expectations and conditions of the program.

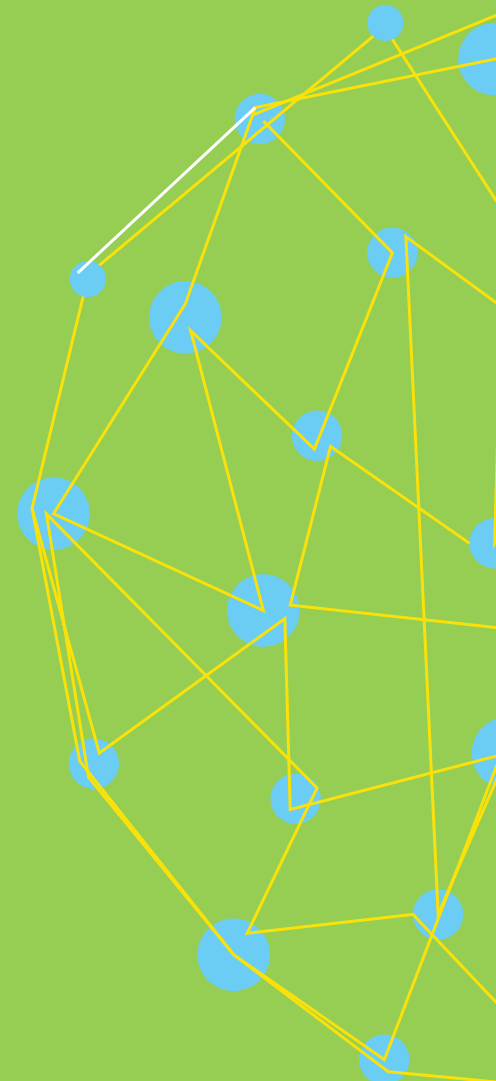
E-LEARNING IN OUR DIVISION

Lethbridge School Division will be continuing with its E-Learning program for students in grades 2-9. How is the Lethbridge School Division E-Learning program different from traditional distance learning and online models where students are entirely independent? Our belief in quality instruction has informed a structure in which students are part of a classroom and school community with direct daily interaction.



Lethbridge
SCHOOL DIVISION

WWW.LETHSD.AB.CA



VALUES

As learning modes and needs change in response to the global and local context, it is important for education to examine delivery systems that are responsive to different learning styles and pedagogy that grows contemporary competencies.

- *Quality instruction*
- *Choice and flexibility*
- *Responding to the needs of students*
- *Opportunity for students to develop 21st-century competencies*
- *Student engagement and achievement*
- *Accessible learning*
- *Students are members of a collective school community*
- *Ongoing daily interaction as part of a classroom community*

WWW.LETHSD.AB.CA



VISION AND MISSION

VISION:

Learners are innovative thinkers who are successful, confident, respectful and caring.

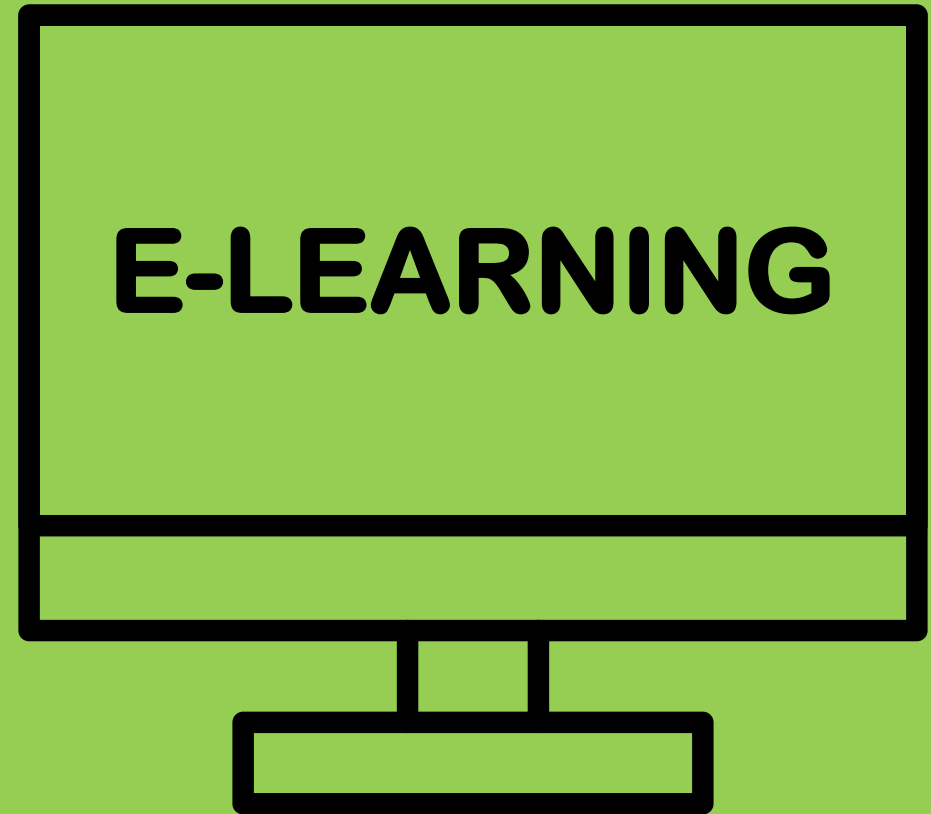
MISSION:

An E-Learning program is flexible, innovative and accountable for engaging students in meaningful digital learning experiences where they can thrive within the school and broader community.

PROGRAM DESCRIPTION

Lethbridge School Division E-Learning will include asynchronous learning (where students engage in learning activities at any time, at their own pace) and synchronous learning (where students engage in course learning at a specific date and time that requires students in the class to be online during the scheduled event).

WWW.LETHSD.AB.CA



PLATFORM AND DELIVERY

E-Learning will be delivered online using integrated and interactive platforms Office 365 and Microsoft Teams. Additional software or apps may be explored.

STRUCTURE

- *All delivery will be in English*
- *Students will be assigned to multiple teachers in middle school*
- *Regular daily attendance is an expectation*
- *Students are engaged in learning Monday to Thursday, and a half day on Friday*
- *Instructional delivery will include whole-group instruction, guided instruction (small group), as well as access to one-on-one teacher support*
- *Parent/teacher communication touch-points are available regularly*
- *Independent and class learning will be made available on Teams*
- *Students may be required to attend the school periodically for special circumstances (Eg. required provincial achievement tests)*
- *Students have opportunities to attend the school for book exchange in the Learning Commons and field trips. Extra-curricular activities are also available to all e-learners*





CURRICULUM

ELEMENTARY:

Programming will include access to the Alberta Program of Studies through:

Literacy Practices

- *Reading: Interactive, shared, guided and independent reading*
- *Writing: focus lesson, peer discussion, independent writing, teacher/student conferencing, share point*

Numeracy Practices

- *Fluency: fluency in the foundations of mathematics through varied and frequent practice with developmentally-appropriate and increasingly-complex tasks.*
- *Reasoning: deep learning through solving rich, highly-cognitive tasks, rigorous discussion and reflection*
- *Problem Solving: formulating, using and testing known strategies to seek solutions*

Social Studies and Science Inquiry Practices

- *Immerse: Build background knowledge on topics and concepts*
- *Investigate: Develop questions, search for information and discover answers*
- *Coalesce: Intensify research, synthesize information and build knowledge*
- *Take public: Share learning, demonstrate understanding and new insights*

PE, Health and Fine Arts

- *Guidance within these subject areas will be woven into instructional delivery*

PROGRAM REQUIREMENTS

ELEMENTARY:

TECHNOLOGY

Students must have 1:1 or individual access to the following items/hardware:

Minimum requirements:

- *Desktop or laptop with a keyboard and mouse*
- *Webcam or device with a webcam/camera*
- *Speakers/speaker system with adequate volume*
- *Reliable high-speed internet connection*
- *Office 365 software (free to all Lethbridge School Division students)*
- *Internet browser (i.e. Safari, Firefox, Microsoft Edge or Chrome)*

Other suggestions for E-Learning

- *Wired headset with microphone*
- *Printer*
- *Comfortable, quiet learning space*

NOTE: It is recommended that each student has their own access to individual hardware requirements, since synchronous learning becomes difficult when there are limited devices available in the home.





CURRICULUM

MIDDLE SCHOOL:

A daily/weekly timetable will be created for students that include both synchronous and asynchronous learning opportunities.

Teachers' instructional programming will follow the Alberta Program of Studies in the subject areas: Language Arts, Mathematics, Social Studies, and Science.

Physical Education and Health will be taught asynchronously. Literacy and numeracy will be woven into the instructional delivery..

PROGRAM REQUIREMENTS

MIDDLE SCHOOL:

Lessons may be accessed from any device connected to the internet, but a student-owned laptop that runs a current version of windows, and can run Microsoft office is essential. Laptops will be made available for purchase that match those used within the school.

This is outside of the One-to-One Laptop Program at Senator Joyce Fairbairn Middle School. Families will need to establish a learning space free of distractions and equipped with the required technological learning tools.



PARENTAL/GUARDIAN COMMITMENT

Parents/guardians must be able to:

- *support and supervise students throughout the day with synchronous and asynchronous learning tasks and assignments, as directed by the teacher.*
- *attend a parent information meeting in the fall for software and program orientation and staff introductions.*
- *pick up and drop off materials and packages the teacher may require for learning purposes*
- *ensure technology is available and the student can access online platforms*
- *review daily lesson summaries and weekly assignments posted on Teams*
- *clearly and consistently communicate with the classroom teacher*

STUDENT COMMITMENT

Students must be able to:

- *regularly attend live instructional sessions*
- *enroll in E-Learning for the entire school year*
- *complete and submit assignments and class work when requested through division-supported platforms and programs*
- *be an active and engaged participant in the classroom community*



APPLICATION FORM

*Please click on the following links
to access the Lethbridge School Division
E-Learning application forms.*

Please fill out one application form only per student:

ELEMENTARY APPLICATION

MIDDLE SCHOOL APPLICATION



WWW.LETHSD.AB.CA

*Please submit your E-Learning program
application by **March 11.***



LETHBRIDGE SCHOOL DIVISION E-LEARNING

WWW.LETHSD.AB.CA