

Vision:

Learners are innovative thinkers who are successful, confident, respectful, and caring.

Mission:

Lethbridge School Division is inclusive, forward thinking, and accountable for engaging students in quality learning experiences that develop strong foundations, innovative minds, and responsible citizens.

Domain: Local and Societal Context

This domain focuses on identifying and responding to the learning needs, interests, aspirations and diverse cultural, social and economic circumstances of all students. It is important for education partners to anticipate local and societal needs and circumstances and respond with flexibility and understanding.

Domain: Governance Outcomes

This domain focuses on governing leaders attending to local and societal context; determining strategic direction; evaluating policy implementation; and managing fiscal resources to ensure learning supports, quality teaching and leading and optimum learning for all.

Governors engage students and their families, staff and community members in the creation and ongoing implementation of a shared vision for student success.

Legislation, policy and regulation provides clarity regarding the roles and responsibilities of education partners in matters of governance.

Domain: Student Growth and Achievement

Students achieve prescribed provincial learning outcomes, demonstrating strengths in literacy and numeracy.

Students apply knowledge, understanding and skills in real-life contexts and situations.

Students advance reconciliation by acquiring and applying foundational knowledge of First Nations, Métis and Inuit experiences. The school community applies the resources needed to support First Nations, Métis and Inuit student achievement.

Students are active, healthy and well.

Students demonstrate understanding and respect for the uniqueness of all learners.

Students use ongoing assessment feedback to reflect continuously on their progress, identify strengths and areas of need and set new learning goals.

Domain: Teaching and Leading

Teachers and leaders respond with skill and competence to the unique learning needs, interests and cultural, social and economic circumstances of all.

Teachers and leaders improve their professional practice through collaborative engagement in processes of growth, supervision and evaluation.

Collaboration amongst teachers, leaders, students and their families, and other professionals, enables optimum learning.

Professional Learning programs prepare teachers and leaders to meet the standards of professional practice.

Teachers and leaders use a range of data arising from their practices to inform cycles of evidence-based continuous learning.

Domain: Learning Supports

Learning environments are welcoming, caring, respectful and safe.

Learning environments are adapted as necessary to meet learner needs, emphasizing a sense of belonging and high expectations for all.

Education partners fulfill their respective roles with a shared understanding of an inclusive education system.

Students and their families work in collaboration with education partners to support learning.

Cross-ministry initiatives and wraparound services enhance conditions required for optimal learning.

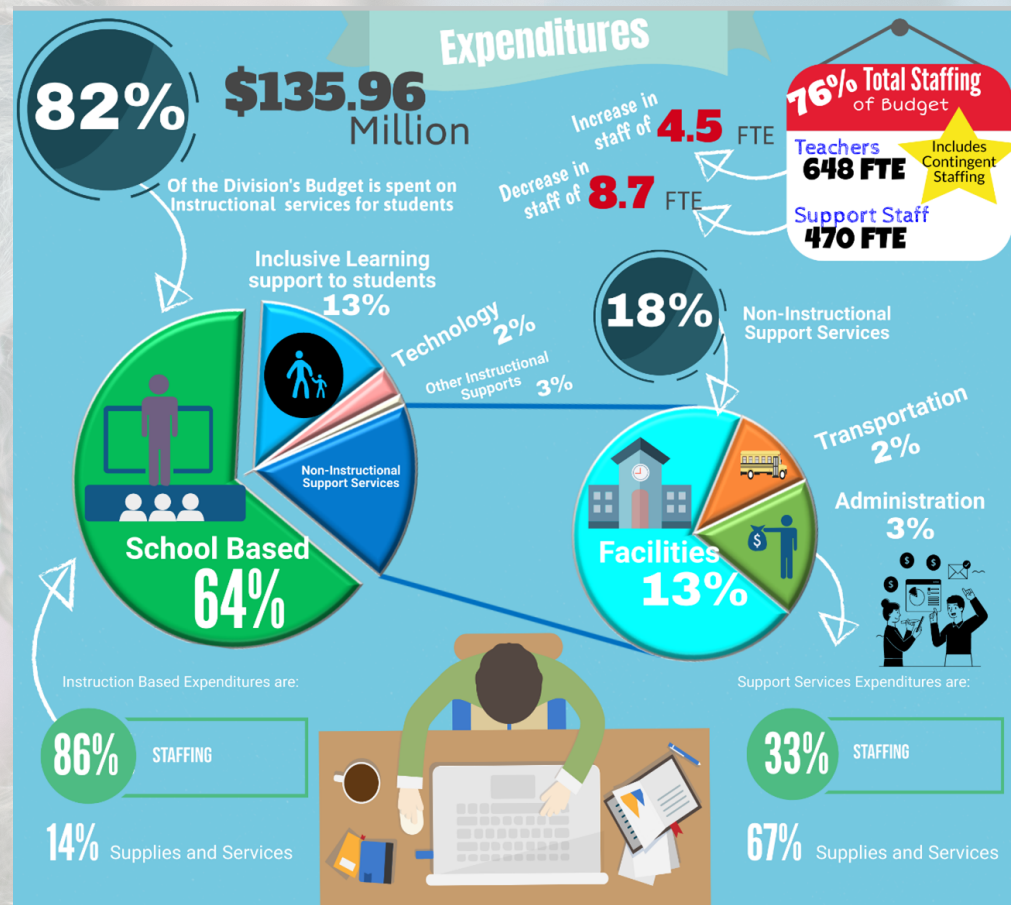
Infrastructure (technology and transportation services) supports learning and meets the needs of Alberta students and their families, staff and communities.

About the Division

Since 1886, Lethbridge School Division has offered high quality learning experiences over a broad range of programs to meet the needs of a wide variety of learners. The Division educates approximately 11,681 early learning through grade 12 students within the city of

Lethbridge and employs approximately 640 full time equivalent (FTE) certificated staff and approximately 480 FTE support staff.

All schools provide instruction in the core subjects (language arts, mathematics, social studies, and science), physical education, and the fine arts. Students at each school have access to Learning Commons that provide a blend of print materials and access to state-of-the-art computers as well as digital resources. French language instruction is offered in Grade 4 through Grade 12 and a French Immersion/French Bilingual program is available for students from Kindergarten through Grade 12. A Spanish Bilingual program is in place at Coalbanks Elementary School. It currently spans Kindergarten to Grade 5. G.S. Lakie Middle School will provide some Spanish Language Program courses for students in Grade 6 starting in the fall of 2022.



Budget Highlights

Lethbridge School Division has a total operating budget of \$135.96 million.

- There was an increase of 4.5 FTE teaching staff from the prior year
- There was a decrease of 8.7 FTE support staff from the prior year due to a decrease in projected PUF students
- Total budgeted revenues for 2021/2022 are \$135.96million. Included in these revenues is approximately \$2.54 million of prior year's reserves.

FIND A LINK TO THE FULL ASSURANCE PLAN HERE: ASSURANCE

A LINK TO THE FINANCIAL AND PRERFORMANCE MEASURES DASHBOARDS CAN BE FOUND HERE: DASHBOARDS