

LETHBRIDGE SCHOOL DIVISION

E-LEARNING



***Dr. Robert Plaxton Elementary School
Senator Joyce Fairbairn Middle School
Lethbridge Collegiate Institute***

2022/2023 School Year: Grade 1-12

There will be an application process with limitations placed on the number of students accepted into the program.

Considerations for acceptance into the program will include distribution of students across Lethbridge School Division, confirmation of technology requirements to participate fully in the program, as outlined in the application, as well as the commitment to adhere to expectations and requirements of the program, as outlined in the application.

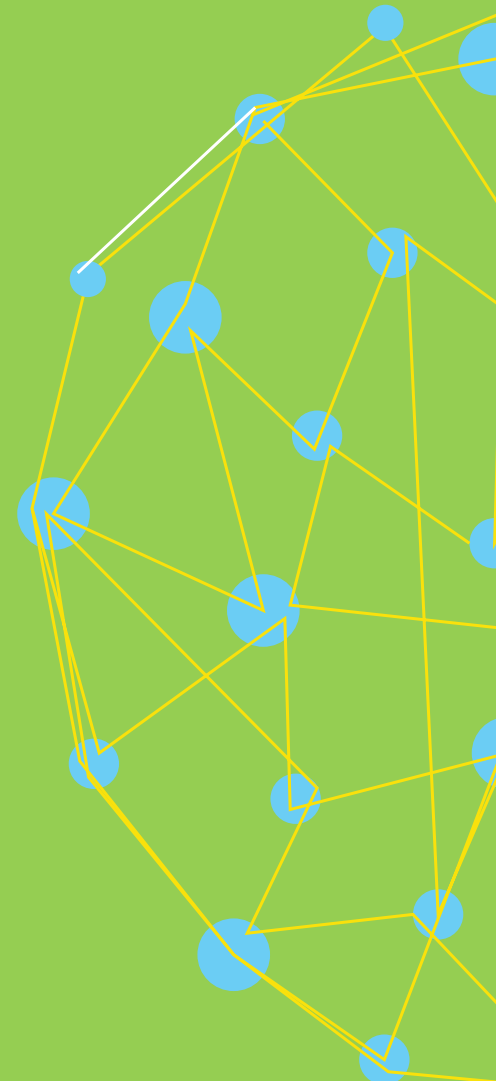
E-LEARNING IN OUR DIVISION

Lethbridge School Division will be continuing with its E-Learning program for students in grades 1-12. How is the Lethbridge School Division E-Learning program different from traditional distance learning and online models where students are entirely independent? Our belief in quality instruction has informed a structure in which students are part of a classroom and school community with direct daily interaction.



Lethbridge
SCHOOL DIVISION

WWW.LETHSD.AB.CA



VALUES

As learning modes and needs change in response to the global and local context, it is important for education to examine delivery systems that are responsive to different learning styles and pedagogy that grows contemporary competencies.

- *Quality instruction*
- *Choice and flexibility*
- *Responding to the needs of students*
- *Opportunity for students to develop 21st century competencies*
- *Student engagement and achievement*
- *Accessible learning*
- *Students are members of a collective school community*
- *Ongoing daily interaction as part of a classroom community*

WWW.LETHSD.AB.CA



VISION AND MISSION

VISION:

Learners are innovative thinkers who are successful, confident, respectful and caring.

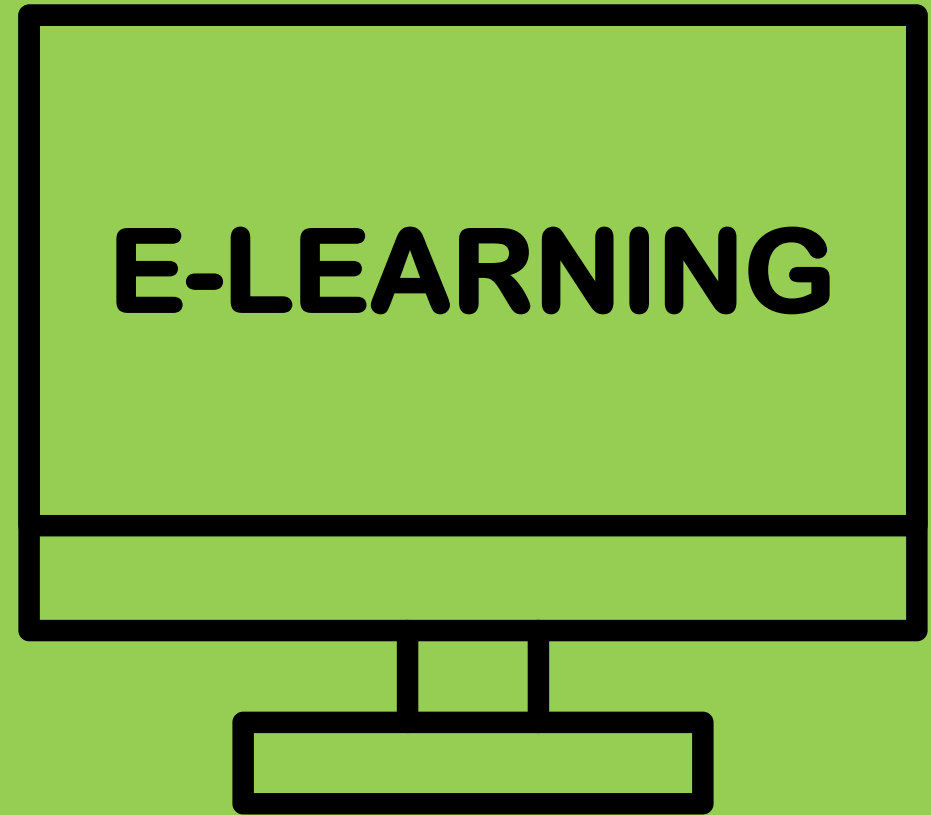
MISSION:

An E-Learning program is flexible, innovative and accountable for engaging students in meaningful digital learning experiences where they can thrive within the school and broader community.

PROGRAM DESCRIPTION

Lethbridge School Division E-Learning will include asynchronous learning (where students engage in learning activities at any time, at their own pace) and synchronous learning (where students engage in course learning at a specific date and time that requires students in the class to be online during the scheduled event).

WWW.LETHSD.AB.CA



PLATFORM AND DELIVERY

E-Learning will be delivered online using integrated and interactive platforms Office 365 and Microsoft Teams. Additional software or apps may be explored in elementary or secondary levels.

STRUCTURE

- *All delivery will be in English*
- *Students will be assigned to one online teacher in elementary and multiple teachers in middle school*
- *Daily attendance will be taken*
- *Students are engaged in learning Monday to Thursday, and a half day on Friday*
- *Instructional delivery will include whole-group instruction, guided instruction (small group), as well as access to one-on-one teacher support*
- *Parent/teacher communication touchpoints will be available*
- *Independent and class learning will be made available on Teams*
- *Students may be required to attend the school occasionally for face-to-face assessments with the teacher*
- *Students may have opportunities to attend the school with their online class for book exchange in the Learning Commons, options at the middle school level and PE and/or Art at the elementary level. Field trips with the online class may also be scheduled as a whole. Opportunities for gathering will be optional and will be communicated by the school.*





CURRICULUM

ELEMENTARY:

Programming will include access to the Alberta Program of Studies through:

Literacy Practices

- *Reading: Interactive, shared, guided and independent reading*
- *Writing: focus lesson, peer discussion, independent writing, teacher/student conferencing, share point*

Numeracy Practices

- *Fluency: fluency in the foundations of mathematics through varied and frequent practice with developmentally-appropriate and increasingly-complex tasks.*
- *Reasoning: deep learning through solving rich, highly-cognitive tasks, rigorous discussion and reflection*
- *Problem Solving: formulating, using and testing known strategies to seek solutions*

Social Studies and Science Inquiry Practices

- *Immerse: Build background knowledge on topics and concepts*
- *Investigate: Develop questions, search for information and discover answers*
- *Coalesce: Intensify research, synthesize information and build knowledge*
- *Take public: Share learning, demonstrate understanding and new insights*

PE, Health and Fine Arts

- *Guidance within these subject areas will be woven into instructional delivery*

PROGRAM REQUIREMENTS

ELEMENTARY:

TECHNOLOGY

Students must have 1:1 or individual access to the following items/hardware:

Minimum requirements:

- *Desktop or laptop with a keyboard and mouse*
- *Webcam or device with a webcam/camera*
- *Speakers/speaker system with adequate volume*
- *Reliable high-speed internet connection*
- *Office 365 software (free to all Lethbridge School Division students)*
- *Internet browser (i.e. Safari, Firefox, Microsoft Edge or Chrome)*

Other suggestions for E-Learning

- *Wired headset with microphone*
- *Printer*
- *Comfortable, quiet learning space*

NOTE: It is recommended that each student has their own access to individual hardware requirements, since synchronous learning becomes difficult when there are limited devices available in the home.

WWW.LETHSD.AB.CA





CURRICULUM

MIDDLE SCHOOL:

A daily/weekly timetable will be created for students that includes both synchronous and asynchronous learning opportunities.

Teachers' instructional programming will follow the Alberta Program of Studies in the subject areas: Language Arts, Mathematics, Social Studies and Science. Physical Education and Health will be taught asynchronously. Literacy and numeracy will be woven into the instructional delivery.

PROGRAM REQUIREMENTS

MIDDLE SCHOOL:

Although lessons may be accessed from any device connected to the internet, please be aware that our teachers often plan lessons and assignments that are intended to be completed on devices with touch screen/stylus capabilities.

Laptops will be made available for purchase that match those used within the school.

This is outside of the One to One Laptop Program at Senator Joyce Fairbairn Middle School.

Families will need to establish a learning space free of distractions and equipped with required technological learning tools.



PROGRAM DESIGN

HIGH SCHOOL:

LCI has been chosen as the home for the Lethbridge School Division, High School E-Learning program.

The mission of our E-Learning program is to provide online students with the same degree of academic rigor and educational experience as would be expected in any traditional on-campus setting. Our E-Learning delivery will include daily interactions between teachers and students with synchronous instruction. In addition, LCI will structure the E-Learning timetable in such a way as to provide students with the flexibility to blend E-Learning classes with other on-campus courses or extra curricular activities.

For more information or to apply to be an E-Learner, please visit the "E-Learning" heading on the LCI homepage.



PARENTAL/GUARDIAN COMMITMENT

Parents/guardians must be able to:

- *support and supervise students throughout the day with synchronous and asynchronous learning tasks and assignments, as directed by the teacher.*
- *attend a parent information meeting in the fall for software and program orientation and staff introductions.*
- *pick up and drop off materials and packages the teacher may require for learning purposes*
- *ensure technology is available and the student can access online platforms*
- *be available to transport students to the school for occasional face-to-face assessments*
- *review daily lesson summaries and weekly assignments posted on Teams*
- *clearly and consistently communicate with the classroom teacher*

STUDENT COMMITMENT

Students must be able to:

- *regularly attend live instructional sessions*
- *enroll in E-Learning for the entire school year*
- *complete and submit assignments and class work when requested through division-supported platforms and programs*
- *be an active and engaged participant in the classroom community*



APPLICATION FORM

*Please click on the following links
to access the Lethbridge School Division
E-Learning application forms.*

Please fill out one application form only per student:

ELEMENTARY APPLICATION

MIDDLE SCHOOL APPLICATION

HIGH SCHOOL APPLICATION



WWW.LETHSD.AB.CA

*Please submit your E-Learning program
application by **March 11.***



LETHBRIDGE SCHOOL DIVISION E-LEARNING

WWW.LETHSD.AB.CA