



2020 COMBINED 2023 THREE-YEAR PLAN

and Annual Education Results Report for 2019-2020

Our Division Priorities

Division Priority 1: Achievement

OUTCOMES:

- Students achieve student learning outcomes with strong foundational skills in literacy and numeracy.
- Teachers possess a deep understanding of pedagogy that develops literacy and numeracy.
- Students are lifelong learners possessing the skills and attributes to successfully transition to further education, credentialing or the world of work
- Indigenous Education student achievement relative to provincial standards will improve.
- School administrators are highly skilled in all areas of the School Leader Quality Standard.
- Teachers are highly skilled in all areas of the Teaching Quality Standard.
- Support staff possess the knowledge, skills, and attributes to support student success and create optimal learning environments.
- Effective learning and teaching is achieved through collaborative leadership and structures that build capacity to improve within and across schools.
- A comprehensive wellness approach promotes well-being and fosters learning.
- The education system demonstrates collaboration and engagement to further Division priorities.

Lethbridge School Division continued to partner with the University of Lethbridge to deliver dual credit classes. The off-campus program continues to flourish.

A division-wide pilot of the Mathematics Intervention Programming Instrument (MIPI) occurred across grades 2-9.

Division Priority 2: Inclusion

OUTCOMES:

- Schools are welcoming, caring, respectful, and safe learning environments.
- Schools are inclusive learning environments where all students are able to grow as learners.

Additional Limited Formal Schooling (LFS) programs was added at G.S. Lakie Middle School and Winston Churchill High School to meet the needs of newcomer/refugee students.

Division Priority 3: Innovation

OUTCOMES:

- Learners demonstrate the attributes of innovation, creativity and critical thinking in a process-based learning environment. Breadth of program choice provides opportunities for students to explore and grow as learners.
- All learners effectively use technology as creative and critical thinkers capable of accessing, sharing and creating knowledge.

Our Vision

Learners are innovative thinkers who are successful, confident, respectful and caring.

Our Mission

Lethbridge School Division is inclusive, forward-thinking and accountable for engaging students in quality learning experiences that develop strong foundations, innovative minds and responsible citizens.

About the Division

Lethbridge School Division takes pride in the breadth of its programs, the expertise of its staff, and the quality of its 23 school and outreach facilities throughout the city

The Division educates approximately 11,340 students within the City of Lethbridge and employs 723 full time equivalent (FTE) certificated staff and 497 FTE support staff.

All schools provide instruction in the core subjects, physical education and the fine arts. French language instruction is offered in Grade 4 through Grade 12 and a French Immersion/French Bilingual program is available for students from Kindergarten through Grade 12. A Spanish Bilingual program is in place at Coalbanks Elementary School.

Community engagement: Active school councils, Division School Council, Division Student Advisory Council, Community Engagement Committee and annual February Town Hall to gather input from stakeholders.



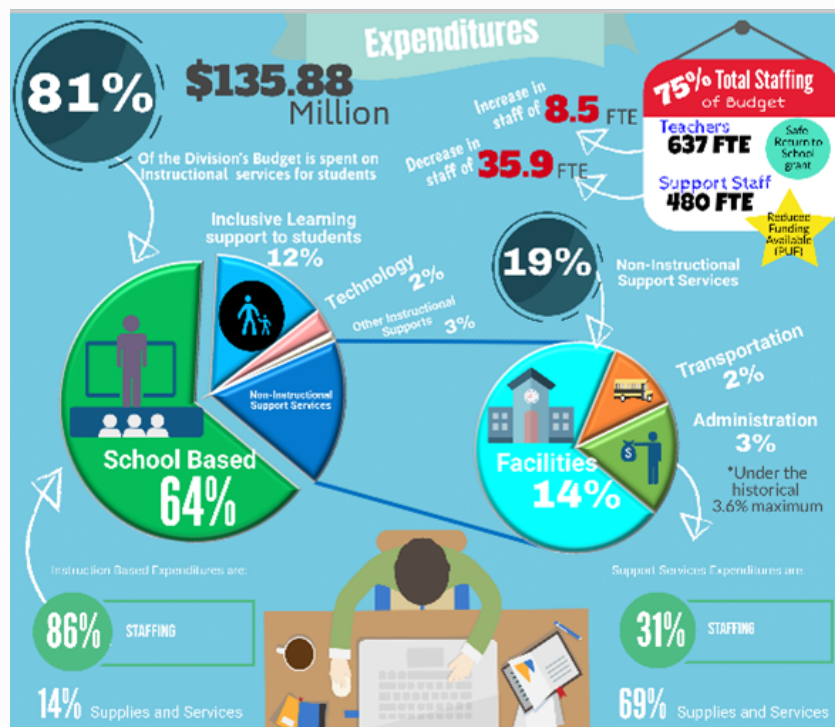
Division Highlights

- Dr. Robert Plaxton Elementary School in Southbrook is now 87% complete and is scheduled to open in September of 2021.
- An elementary behaviour support team was created to help build understanding of challenging behaviours and provide school staff with strategies to support students.
- Facility Services completed over 250 infrastructure, maintenance, and renewal projects to maintain our safe and clean schools and to accommodate our growing student population and program needs.
- The Board hosted a Town Hall for the purpose of gathering public feedback relative to what was going well and what areas could be improved. Over 200 participants contributed ideas using a thought stream process during the event.
- The Division has created safety practices to align with provincial regulations and to support building a culture of safety for all staff, the Division has created a new Occupational Health and Safety Management System. During the summer, many safety protocols were developed and implemented to address COVID-19 in our schools.
- Eleven schools participated in the Alberta Education Nutrition Program.

Budget Highlights

The 2020/2021 budget is \$135.88 million.

- There was an overall increase of 8.5 FTE in teaching staff from the prior year.
- There was an overall reduction of 35.9 FTE in support staff.
- Enrolment dropped to 11,249 students, a decrease of 504 students or 4.29%.
- Total budgeted revenues for 2020-2021 are \$135.88 million. Included in these revenues is approximately \$2.65 million of prior year's reserves. Total revenues for the Division increased slightly from the 2019-2020 total of 134 million.



Accountability Pillar

Measure Category	Measure	Lethbridge School Division			Alberta			Measure Evaluation		
		Current Result	Prev Year Result	Prev 3 Year Average	Current Result	Prev Year Result	Prev 3 Year Average	Achievement	Improvement	Overall
Safe and Caring Schools	Safe and Caring	87.5	87.9	88.1	89.4	89.0	89.2	High	Maintained	Good
Student Learning Opportunities	Program of Studies	84.2	84.6	84.3	82.4	82.2	82.0	Very High	Maintained	Excellent
	Education Quality	89.0	89.7	89.3	90.3	90.2	90.1	High	Maintained	Good
	Drop Out Rate	4.6	4.1	4.3	2.7	2.6	2.7	Intermediate	n/a	n/a
	High School Completion Rate (3 yr)	73.6	73.4	71.4	79.7	79.1	78.4	Intermediate	Maintained	Acceptable
Student Learning Achievement (Grades K-9)	PAT: Acceptable	n/a	70.3	71.3	n/a	73.8	73.6	n/a	n/a	n/a
	PAT: Excellence	n/a	18.4	18.1	n/a	20.6	20.0	n/a	n/a	n/a
Student Learning Achievement (Grades 10-12)	Diploma: Acceptable	n/a	82.2	81.1	n/a	83.6	83.4	n/a	n/a	n/a
	Diploma: Excellence	n/a	17.8	17.3	n/a	24.0	23.5	n/a	n/a	n/a
	Diploma Exam Participation Rate (4+ Exams)	46.2	44.4	44.4	56.4	56.3	55.6	Intermediate	Maintained	Acceptable
	Rutherford Scholarship Eligibility Rate	62.3	59.5	57.7	66.6	64.8	63.5	Intermediate	n/a	n/a
Preparation for Lifelong Learning, World of Work, Citizenship	Transition Rate (6 yr)	59.5	56.5	56.5	60.1	59.0	58.5	High	Improved	Good
	Work Preparation	79.5	78.7	78.4	84.1	83.0	82.7	High	Maintained	Good
	Citizenship	79.4	79.2	79.8	83.3	82.9	83.2	High	Maintained	Good
Parental Involvement	Parental Involvement	80.7	78.5	78.2	81.8	81.3	81.2	High	Improved	Good
Continuous Improvement	School Improvement	78.8	79.3	78.3	81.5	81.0	80.9	High	Maintained	Good



FIND A LINK TO THE FULL REPORT HERE: [AERR](#)

