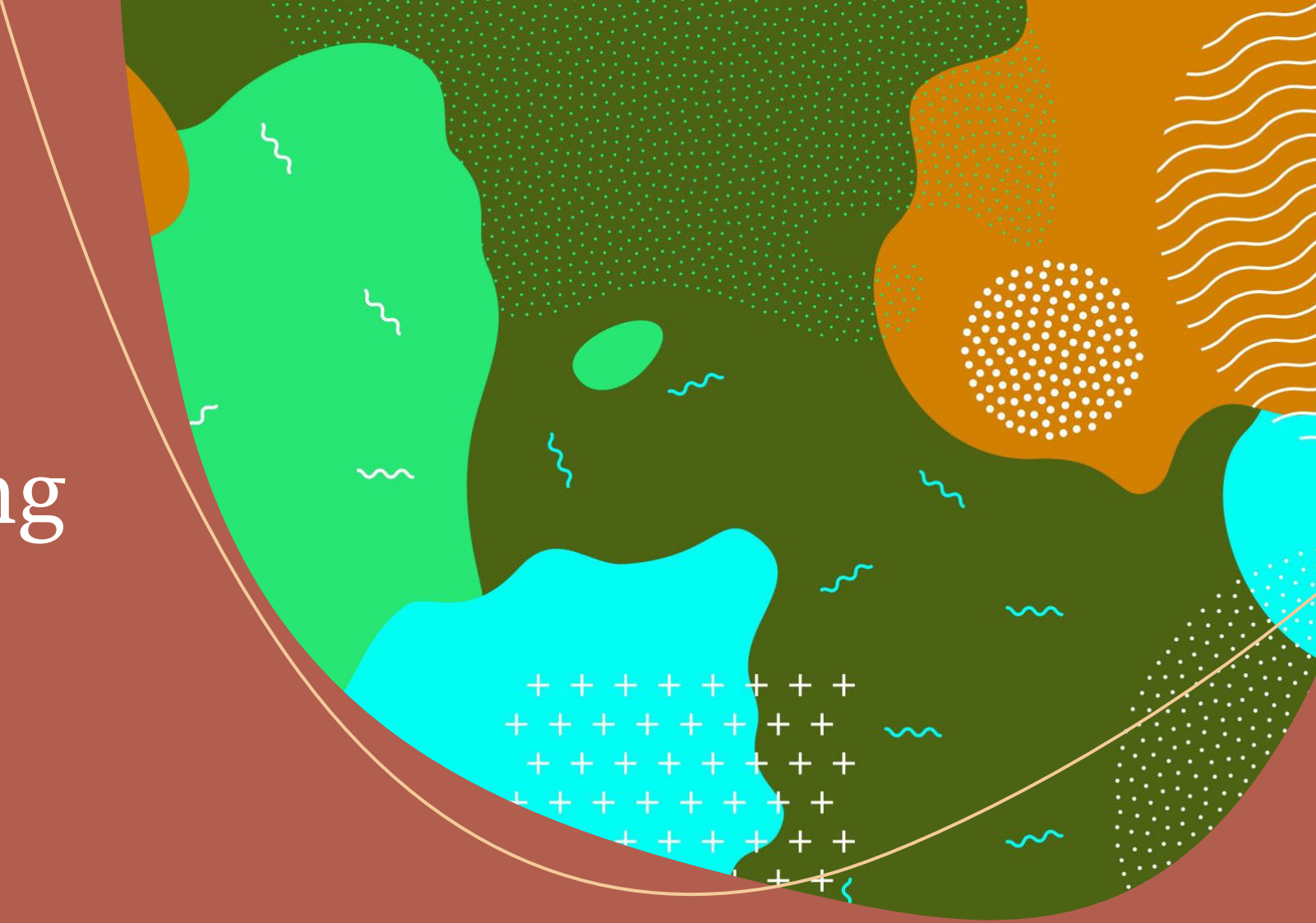


COVID-19 Decision-Making and Protocols



Topics

- Decision Making:

Screening Tool

COVID positive tests, close contacts and isolation

Communication

- Protocols

Cohorts

Masks

Hygiene

Social Distancing

AHS - NEW SCREENING TOOL EFFECTIVE NOVEMBER 2 – (Three Sections)

1. Has the child:

(Choose any/all possible exposures)

Traveled outside Canada in the last 14 days? When entering or returning to Alberta from outside Canada, individuals are legally required to quarantine for 14 days unless enrolled in the Alberta COVID-19 International Border Pilot Project	YES	NO
Had close contact with a case of COVID-19 in the last 14 days? Face-to-face contact within 2 metres for 15 minutes or longer, or direct physical contact such as hugging	YES	NO
If the child answered “YES” to any of the above: <ul style="list-style-type: none">• The child is required to quarantine for 14 days from the last day of exposure.<ul style="list-style-type: none">○ If the child is participating in the Alberta COVID-19 International Border Pilot Project, they must comply with the program restrictions at all times.• If the child develops any symptoms, use the AHS Online Assessment Tool or call Health Link 811 to determine if testing is recommended.		
If the child answered “NO” to both of the above: <ul style="list-style-type: none">• Proceed to question 2.		

2. Does the child have any new onset (or worsening) of the following core symptoms:

Fever Temperature of 38 degrees Celsius or higher	YES	NO
Cough Continuous, more than usual, not related to other known causes or conditions such as asthma	YES	NO
Shortness of breath Continuous, out of breath, unable to breathe deeply, not related to other known causes or conditions such as asthma	YES	NO
Loss of sense of smell or taste Not related to other known causes or conditions like allergies or neurological disorders	YES	NO
If the child answered “YES” to any symptom in question 2: <ul style="list-style-type: none">• The child is to isolate for 10 days from onset of symptoms.• Use the AHS Online Assessment Tool or call Health Link 811 to arrange for testing and to receive additional information on isolation. If the child answered “NO” to all of the symptoms in question 2: <ul style="list-style-type: none">• Proceed to question 3.		

3. Does the child have any new onset (or worsening) of the following other symptoms:

Chills Without fever, not related to being outside in cold weather	YES	NO
Sore throat/painful swallowing Not related to other known causes/conditions, such as seasonal allergies or reflux	YES	NO
Runny nose/congestion Not related to other known causes/conditions, such as seasonal allergies or being outside in cold weather	YES	NO
Feeling unwell/fatigued Lack of energy, poor feeding in infants, not related to other known causes or conditions, such as depression, insomnia, thyroid dysfunction or sudden injury	YES	NO
Nausea, vomiting and/or diarrhea Not related to other known causes or conditions, such as anxiety, medication or irritable bowel syndrome	YES	NO
Unexplained loss of appetite Not related to other known causes or conditions, such as anxiety or medication	YES	NO
Muscle/joint aches Not related to other known causes or conditions, such as arthritis or injury	YES	NO
Headache Not related to other known causes or conditions, such as tension-type headaches or chronic migraines	YES	NO
Conjunctivitis (commonly known as pink eye)	YES	NO

If the child answered "YES" to ONE symptom in question 3:

- Keep your child home and monitor for 24 hours.
- If their symptom is **improving** after 24 hours, they can return to school and activities when they feel well enough to go. Testing is not necessary.
- If the symptom **does not improve or worsens** after 24 hours (or if additional symptoms emerge), use the [AHS Online Assessment Tool](#) or call Health Link 811 to check if testing is recommended.

If the child answered "YES" to TWO OR MORE symptoms in question 3:

- Keep your child home.
- Use the [AHS Online Assessment Tool](#) or call Health Link 811 to determine if testing is recommended.
- Your child can return to school and activities once their symptoms go away as long as it has been at least 24 hours since their symptoms started.

If the child answered "NO" to all questions:

- Your child may attend school, child care and/or other activities.

Please note: If your child is experiencing any symptoms from the lists above, do not bring them to visit a continuing care or acute care facility for 10 days from when symptoms started/until symptoms resolve (whichever is longer), unless they receive a negative COVID-19 test result and feel better.

Tool for Adults

Attendees should complete this checklist prior to participating in the activity or program.

If an individual answers **YES** to any of the questions, they **must not** be allowed to attend or participate in the activity or program. *Individuals with fever, cough, shortness of breath, runny nose, or sore throat, are required to isolate for 10 days per [CMOH Order 05-2020](#) **OR** receive a negative COVID-19 test and feel better before returning to activities.

Use the [AHS Online Assessment Tool](#) to determine if testing is recommended and follow information on [isolation requirements](#).

As the COVID-19 pandemic continues to evolve, this screening tool will be updated as required.

Screening Questions

1.	Does the attendee have any new onset (or worsening) of any of the following symptoms:	CIRCLE ONE	
		YES	NO
	• <i>Fever*</i>	YES	NO
	• <i>Cough*</i>	YES	NO
	• <i>Shortness of breath / difficulty breathing*</i>	YES	NO
	• <i>Runny nose*</i>	YES	NO
	• <i>Sore throat*</i>	YES	NO
	• Chills	YES	NO
	• Painful swallowing	YES	NO
	• Nasal congestion	YES	NO
	• Feeling unwell / fatigued	YES	NO
	• Nausea / vomiting / diarrhea	YES	NO
	• Unexplained loss of appetite	YES	NO
	• Loss of sense of taste or smell	YES	NO
	• Muscle/ joint aches	YES	NO
	• Headache	YES	NO
	• Conjunctivitis (commonly known as pink eye)	YES	NO
2.	Has the attendee travelled outside Canada in the last 14 days? (Individuals are legally required to quarantine for 14 days when entering or returning to Alberta from outside Canada unless exempted by the Alberta COVID-19 Border Testing Pilot Program.)	YES	NO
3.	Has the attendee had close contact ¹ with a case of COVID-19 in the last 14 days?	YES	NO

¹ Face-to-face contact within 2 metres. A health care worker in an occupational setting wearing recommended personal protective equipment is not considered to be a close contact.

Parent “How Long to Stay at Home Guide”

- <https://open.alberta.ca/publications/covid-19-information-how-long-to-stay-home-from-school>
- Note – was on Alberta site Friday – no link to the guide Sunday – may have been some incongruencies between the guide and new screening tool – will post as soon as available.

Symptomatic at School

If symptoms develop at school

- The student will be asked to wear a non-medical mask and be isolated in a separate room or kept at least 2 metres away from others.
- Parents will be contacted to pick up the child immediately (ensure your school has up-to-date contact information).

Classmates and close contacts

If a student is a close contact of someone confirmed to have COVID-19, they must quarantine and stay home for 14 days. This longer period of time is required because the incubation period of COVID-19 is two weeks. Visit [Isolation requirements](#) for more detailed information.

Close contacts include people who:

- take care of someone with COVID-19 or had contact through touch with the person with COVID-19
- were close to that person for a long time, or
- were coughed or sneezed on by that person

AHS will confirm and contact close contacts when there is a case at school and will contact parents and staff.

Generally, the entire classroom is considered to be close contacts of the case. This is a cautious approach to identifying close contacts in order to minimize the risk of transmission.

This means that if a student tests positive for COVID-19, all of their classmates must quarantine and stay home for 14 days. Additionally, all of these classmates should also be tested for COVID-19. Even if a classmate of a case is tested and the result is negative, they still must complete the 14 day quarantine.




Household members

If a student is identified to be a close contact (for example, is a classmate of a student who tests positive), family members of the close contact do not need to quarantine unless the close contact also develops symptoms.

Family members or other people in the household who had contact with a student while they were infectious (had symptoms) are required to quarantine for 14 days from the last time they were exposed to the sick student.

AHS Public Health will determine who is a close contact and how long they are required to quarantine when they complete their investigation.



Returning to school after an illness

A student who is required to isolate due to these symptoms - fever, cough, shortness of breath, loss of sense of smell or taste - or due to having COVID-19, can return to school after a minimum of 10 days pass from when symptoms started or after their symptoms resolve, whichever is longer.

A student who is required to isolate due to these [symptoms](#) may also return to school if they test negative for COVID-19 and are feeling better, as long as they have not been identified as a close contact of a case of COVID-19.

Students who have pre-existing medical conditions with symptoms similar to COVID-19

The first time your child has a symptom that could be caused by COVID-19 or by a known pre-existing medical condition (such as a cough related to asthma), keep your child home and have your child tested for COVID-19.

Your child should be tested for COVID-19 to confirm that the symptom is not due to COVID-19 before they return to school. This will be considered your child's baseline health. They may continue to attend school as long as this symptom stays the same and they do not develop any new symptoms.

If there is a case of COVID-19 at school

All parents will be notified when:

- one confirmed COVID-19 case is identified as having been infectious while at school
- an outbreak is declared

- AHS Contacts the School Jurisdiction
- The Jurisdiction works with AHS to send entire school community an Alert or Outbreak or Watch letter (AHS letter – sent by Lethbridge SD)
- The Jurisdiction provides AHS with the student's schedule and class lists so AHS can make decisions regarding close contacts
- AHS prepares close contact letter – Jurisdiction sends letter
- Identity of student or staff member who tested positive is confidential

- Two cases is considered an Outbreak
- Five or more cases put school on “Watch”

- AHS Public Health will work with school authorities to quickly:
 - identify when symptoms developed
 - identify and contact people who had close contact with the person who tested positive to offer testing and let them know about quarantine requirements
 - People are required to quarantine for 14 days if they live with or are a close contact of a person who tested positive for COVID-19.
 - Only close contacts of a confirmed case of COVID-19 need to quarantine. Contacts of close contacts do not need to quarantine.

What Happens at the School?

- As mentioned, the school assists AHS – schedule, attendance and class lists for identification of close contacts and sending of AHS letters (school system has more expedient means of sending the letters).
- School administration navigates what learning will look like for students.
 - All levels – teacher and class are quarantined the delivery of learning will be on-line using Teams

What happens at the school?

- If teacher quarantined, but not the students?
 - High School (grades 10-12) all of the classes of the quarantined teacher will be online using Teams (may be some exceptions)
 - Grades K to 9. Different scenarios depending on grade, class configuration, and the teacher's assignment. Possibilities: substitute teacher assuming all responsibilities; substitute teacher in tandem with quarantined teacher for delivery; quarantined teacher delivers some instruction online to class in the school
- If student quarantined, but not the teacher or rest of the class?
 - Teacher assumes responsibility for the students (may be some packages prepared; may be some online streaming of lessons; may be a combination of packages, work on Teams, and streaming of lessons.

Summary

- AHS – communicates positive cases (confidential – informs Jurisdiction of the class(es)).
- Jurisdiction provides attendance, class lists, schedule
- AHS prepares Alert letter for the community (or Outbreak letter if 2 or more cases). Jurisdiction sends the letter.
- AHS determines who the close contacts are. AHS prepares letter for close contacts. Jurisdiction sends the letter
- Schools determine what delivery of learning will look like for students.

IMPORTANT FOR PARENTS:
HAVING A CHILD IN QUARANTINE CAN
HAPPEN TO ANYONE. INSTRUCTIONAL
DELIVERY WILL CONTINUE.
MAY TAKE A DAY FOR TURNAROUND TO
ONLINE LEARNING
FAMILIES SHOULD ENSURE THEY KNOW
PASSWORDS FOR TEAMS AND CAN LOG IN.

Lethbridge School Division Pandemic Plan

- Document made by a number of stakeholders that serves the purpose of guiding decision making within the school division for *any* Pandemic situation. Structured to align with WHO, national and provincial pandemic plans.
- Focuses on identifying essential and non-essential operations so that the jurisdiction is guided to focus on essential operations
- Outlines a succession plan in case staff in essential positions cannot fulfill roles and responsibilities.
- The plan guides decision making at all levels. It is a Board document

School Division Re-entry Guide

- More detailed because it is informed by provincial guidelines.
- For the current Pandemic – COVID-19, the provincial government made a school re-entry plan that encompasses 3 possible scenarios: near normal operations; restricted operations with distancing requirements; schools closed to students and all learning at home.
- Re-opened schools in fall under Scenario One – Near Normal Operations

School Division Re-entry Guide

- Detailed Parent Re-entry Guide on website and updated if Alberta Health Services/ Alberta Education update the provincial plan
- Consideration given to the primary strategies identified in the provincial plan: cohorting, hygiene protocols, masking, distancing where possible
- The provincial re-entry requirements for each of those areas are minimum standards; a school jurisdiction may have more stringent application of the strategies and consider the strategies over time



Questions?