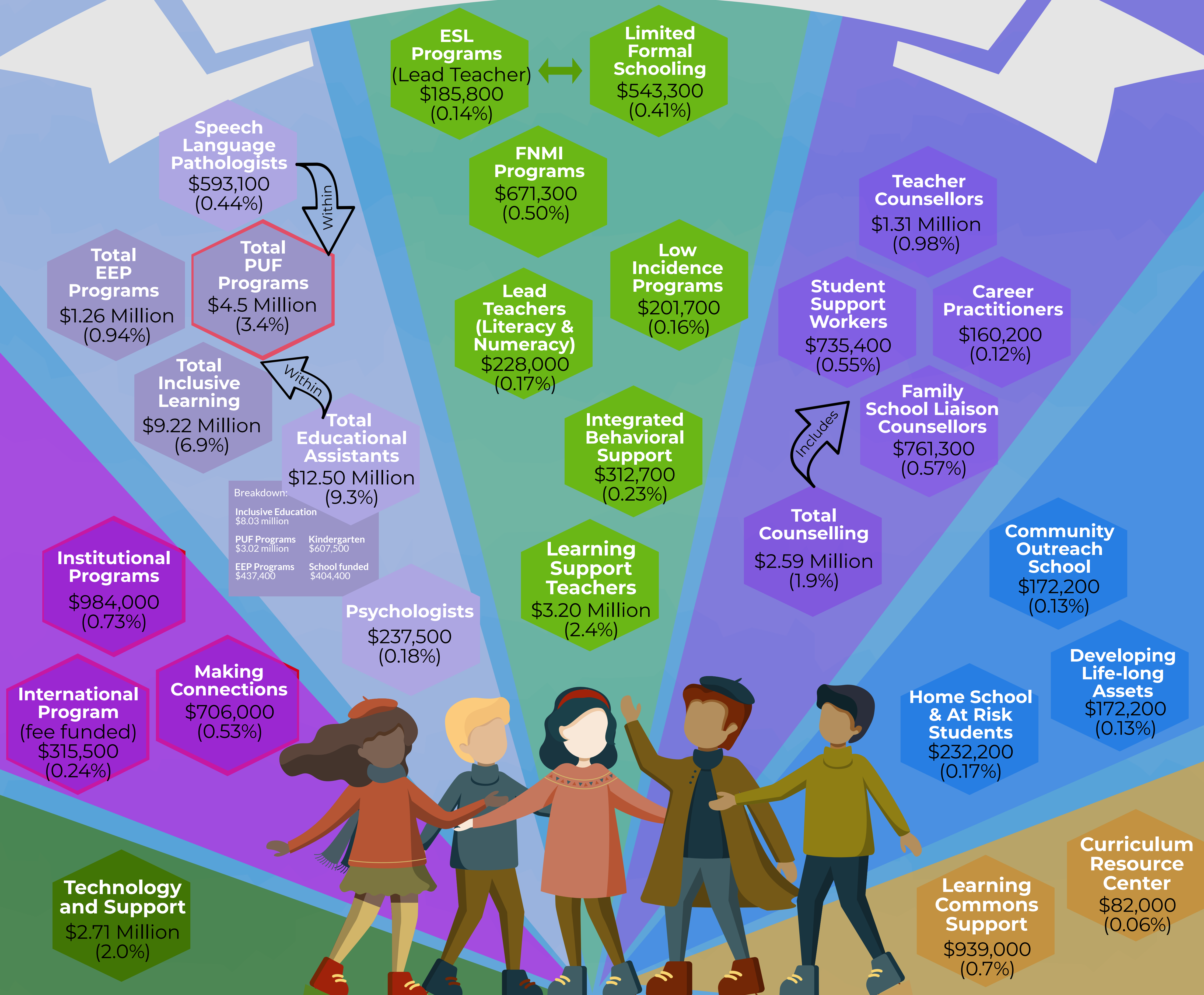


How our Students are Supported

51

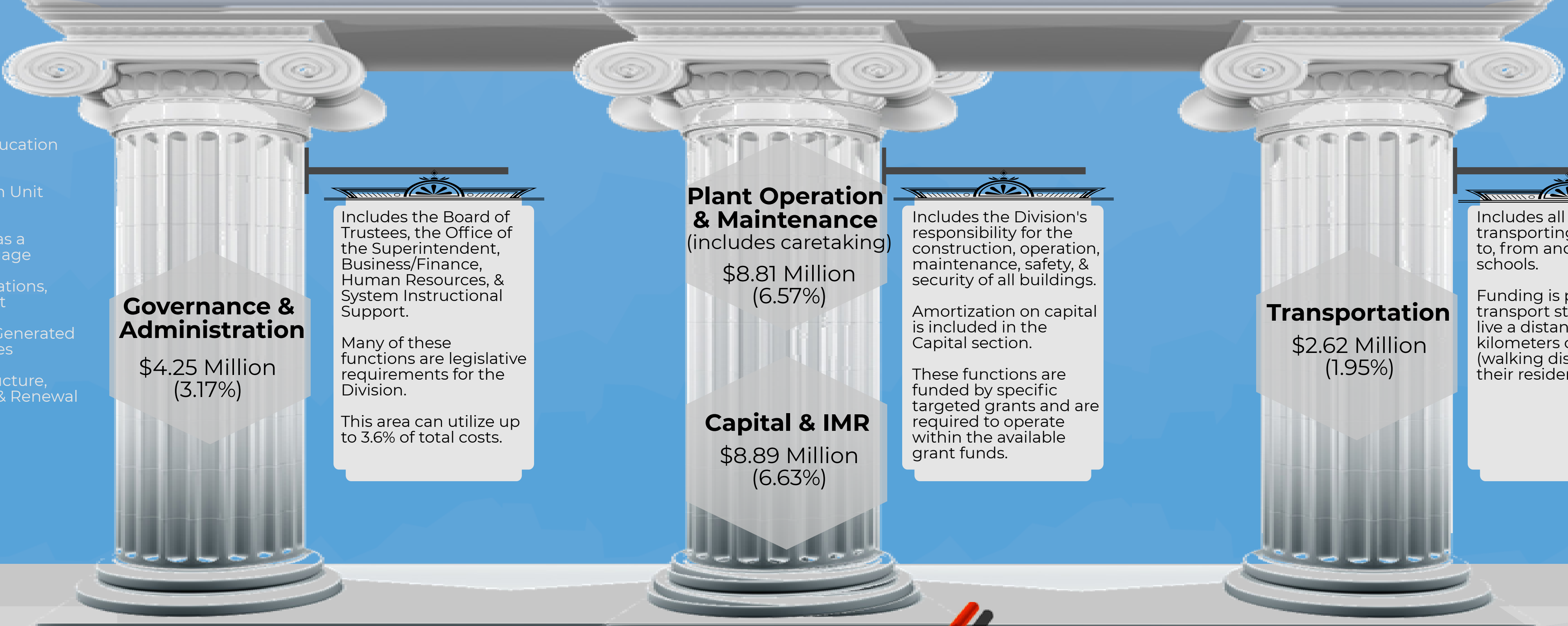


Breakdown:
 Inclusive Education \$8.03 million
 PUF Programs \$3.02 million Kindergarten \$607,500
 EEP Programs \$437,400 School funded \$404,400



Classroom Teachers \$58.45 Million (43.6%)

School Administrators \$6.63 Million (5.0%)
School-level Administrative Support \$2.45 Million (1.8%)
School Supplies, & Services \$5.04 Million (3.8%)



Acronyms:
 EEP - Early Education Program
 PUF - Program Unit Funding
 ESL - English as a Second Language
 FNMI - First Nations, Metis and Inuit
 SGF - School Generated Funds/Activities
 IMR - Infrastructure, Maintenance & Renewal

Specific Funding (costs tied to funding)



Board Priorities: Inclusion Innovation Achievement

Lethbridge School Division is inclusive, forward-thinking, and accountable for engaging students in quality learning experiences that develop strong foundations, in novative minds and responsible citizens.

Figures are based on the 2019/2020 Operating Budget as approved by the Board of Trustees (November 2019).