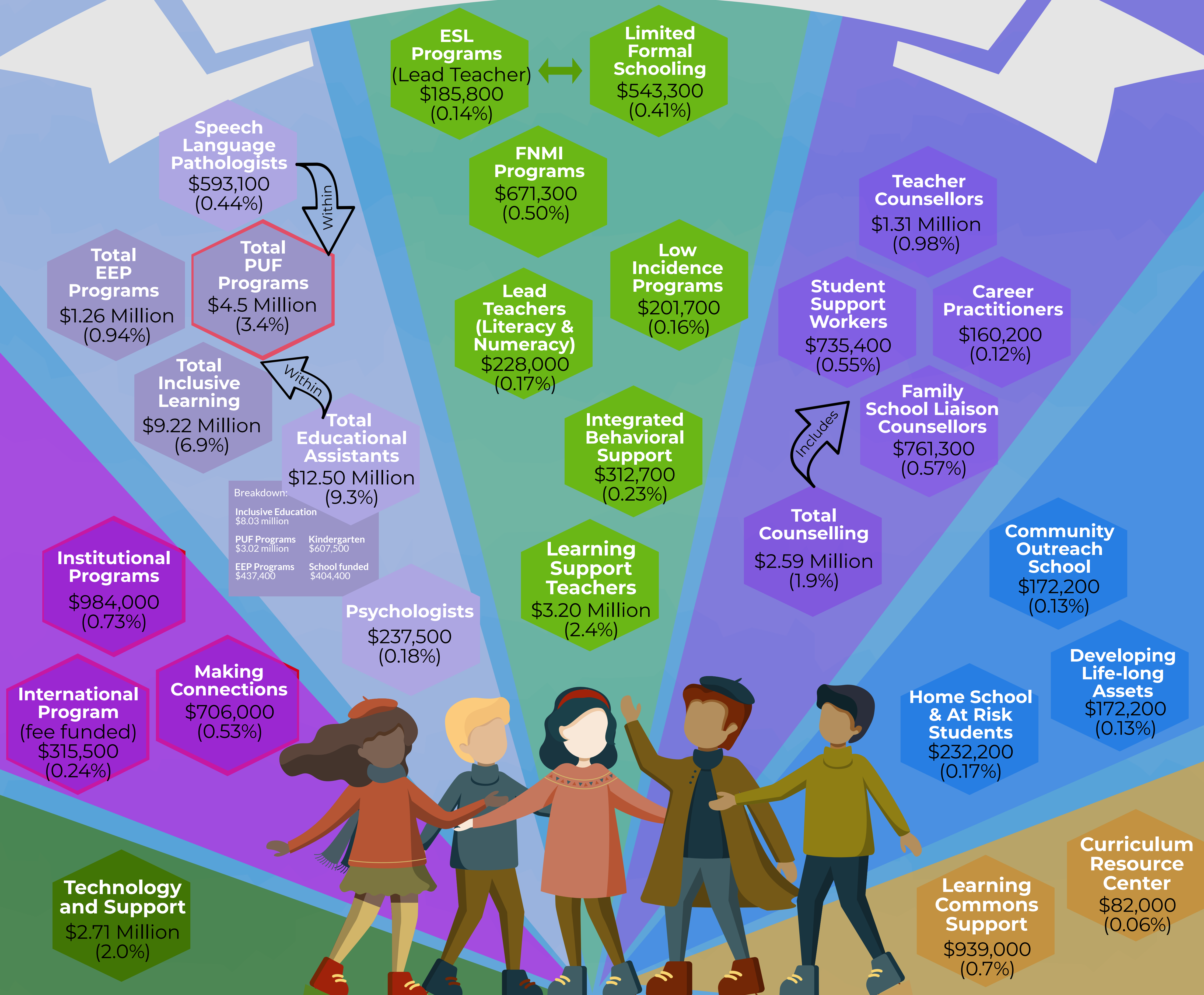


# How our Students are Supported

51

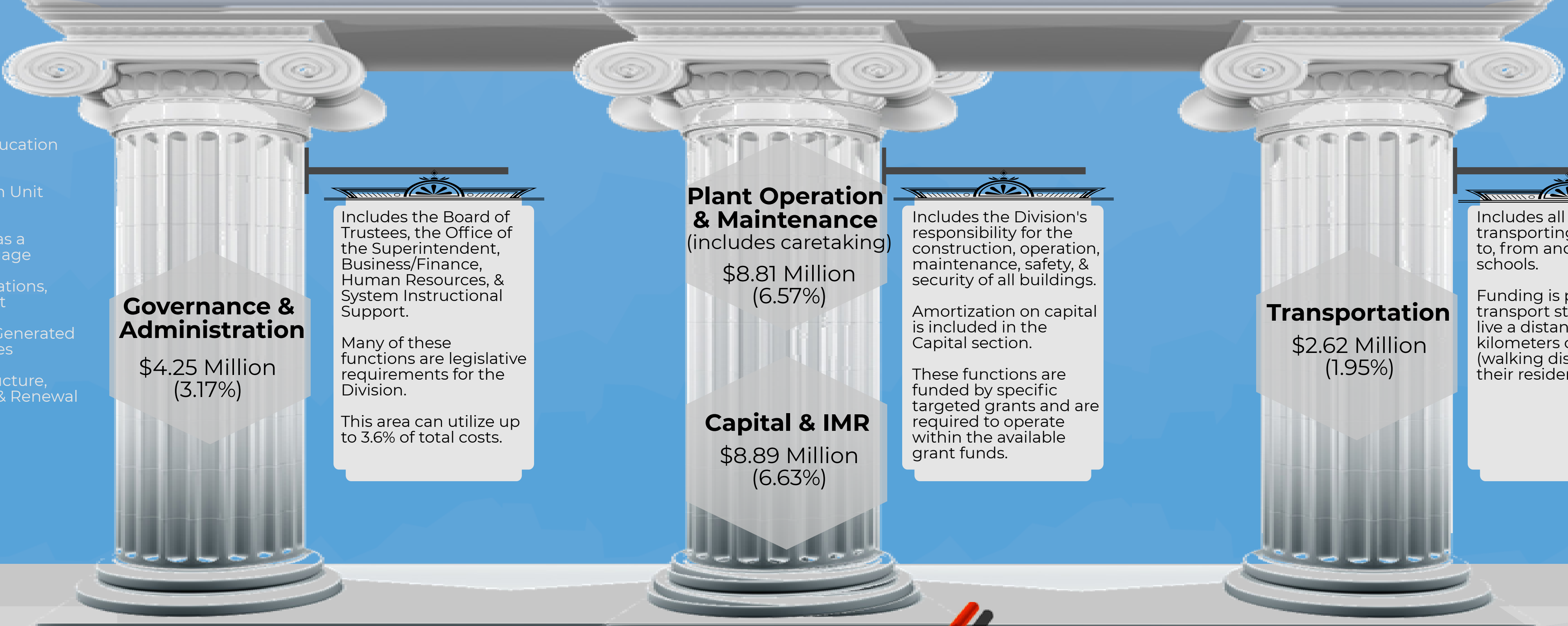


Breakdown:  
 Inclusive Education \$8.03 million  
 PUF Programs \$3.02 million Kindergarten \$607,500  
 EEP Programs \$437,400 School funded \$404,400



## Classroom Teachers \$58.45 Million (43.6%)

**School Administrators** \$6.63 Million (5.0%)  
**School-level Administrative Support** \$2.45 Million (1.8%)  
**School Supplies, & Services** \$5.04 Million (3.8%)



**Acronyms:**  
 EEP - Early Education Program  
 PUF - Program Unit Funding  
 ESL - English as a Second Language  
 FNMI - First Nations, Metis and Inuit  
 SGF - School Generated Funds/Activities  
 IMR - Infrastructure, Maintenance & Renewal

Specific Funding (costs tied to funding)



**Board Priorities:** Inclusion Innovation Achievement

Lethbridge School Division is inclusive, forward-thinking, and accountable for engaging students in a breath of quality learning experiences that develop innovative minds and responsible global citizens.

Figures are based on the 2019/2020 Operating Budget as approved by the Board of Trustees (November 2019).