

SUCCEED WITH US!

# STUDY IN LETHBRIDGE



Lethbridge  
**SCHOOL DIVISION**

# WHERE ARE WE?

Alberta is in the western part of Canada, near the Rocky Mountains.

Lethbridge is in the southern part of Alberta close to the U.S border.



# WHY STUDY IN ALBERTA?

- One of the strongest economies in North America
- Highest per capita family income in Canada – high quality of life
- Lowest unemployment rate in Canada
- Government invests heavily in education
- No provincial sales tax – less expensive to live in Alberta.



# LETHBRIDGE, ALBERTA

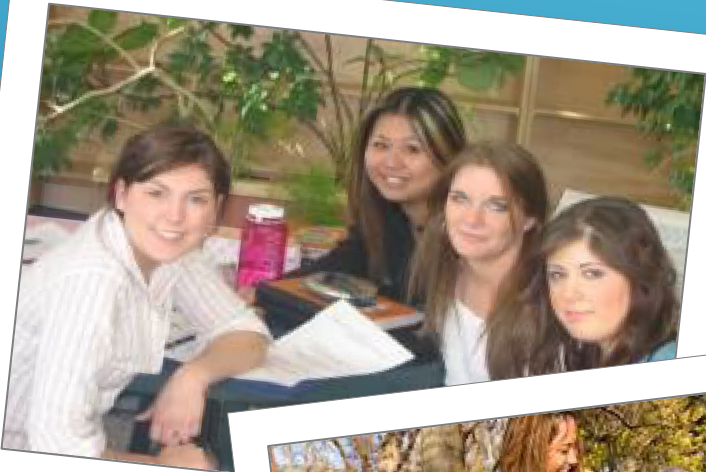


- Southern Alberta – farming, education, research, industry, oil, natural gas
- Weather – Chinooks
- Excellent educational programs for international students – high school, college, university



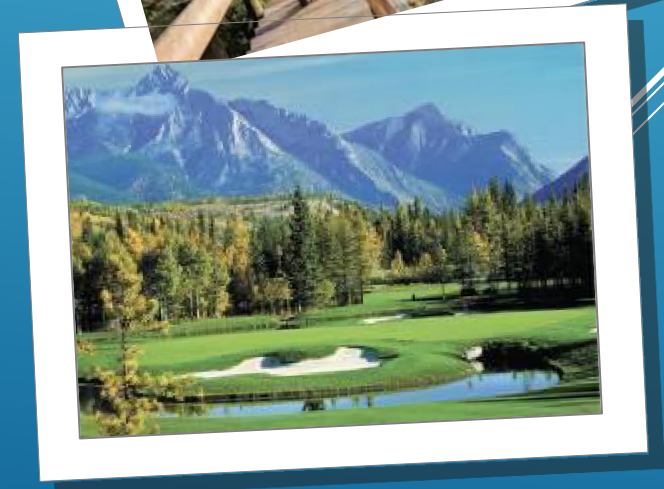
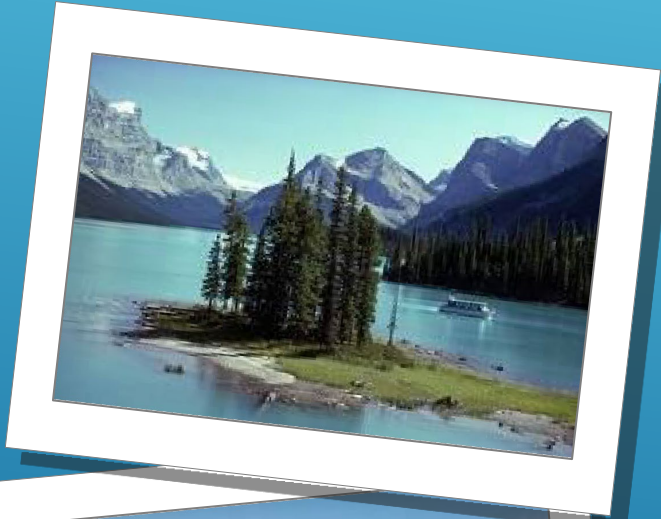
# HIGH QUALITY OF LIFE

- 100 000 residents: safe, accessible
- Many parks and recreation facilities
- Shopping malls, art galleries, museums, restaurants



# HIGH QUALITY OF LIFE

- Close to the Rocky Mountains
- Clean air and water
- A climate with four seasons





# LETHBRIDGE SCHOOL DIVISION

- Four high schools
- High speed WIFI
- Excellent academic and co-curricular programs
- Safe, clean community



# FOCUS ON STUDENTS

- Government-certified, enthusiastic teachers who challenge their students
- Support systems in place – International Services Office, CHN Relationships Manager, Vice Principal in each school, Academic Advisor

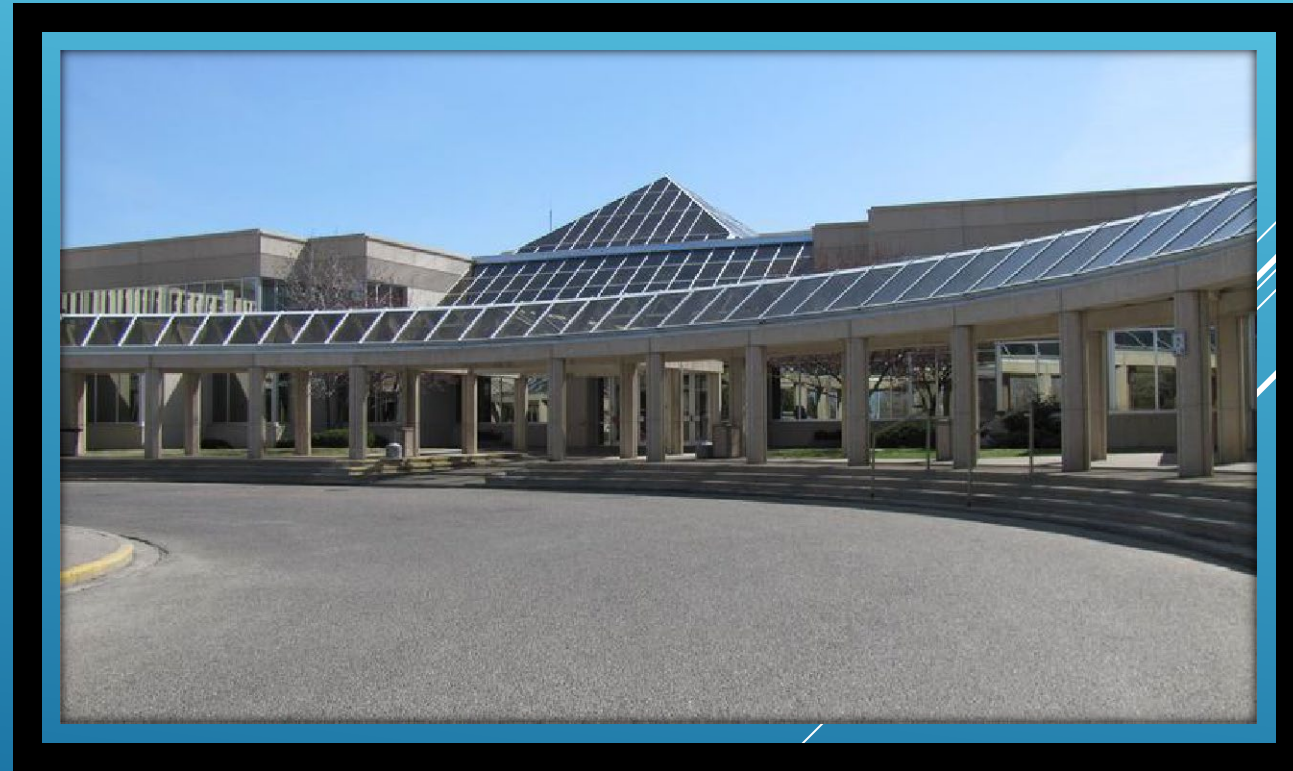




# AFTER GRADUATION

An Alberta high school diploma is accepted in colleges and universities world-wide.

- Lethbridge College:
- offers many programs for international students: agriculture, automotives, criminal justice, criminal justice, early childhood education, fashion design, health care aide, interior design, massage therapy, multimedia production...
- Offers transfer programs to the university in Nursing and Business Administration
- Requires 100 high school credits, including English 30-2 for admission



Lethbridge College

# AFTER GRADUATION

## The University of Lethbridge

- Offers undergraduate degrees in Humanities, Sciences, Social Sciences, Education (teaching), Fine Arts, Health Sciences, and Management, Nursing
- Offers graduate (Masters) programs in Arts, Counselling, Education, Fine Arts, Music, Nursing, Science, and Management
- Offers PhD programs in Sciences.
- Offers preparation programs to transfer for medicine, pharmacy, dentistry, engineering  
Requires 100 high school credits and English and Math 30-1 for admission.





# WHERE ARE OUR STUDENTS NOW?

- In the past 3 years, every international student who has come to Lethbridge to study, with the intention to graduate, has successfully graduated with a high school diploma from Alberta. We have a 100% success rate which we attribute to excellent teaching, good support, and personal service.
- Last year, we had five graduates. They are all currently enrolled in colleges or universities in Canada, the United States, or their home country.

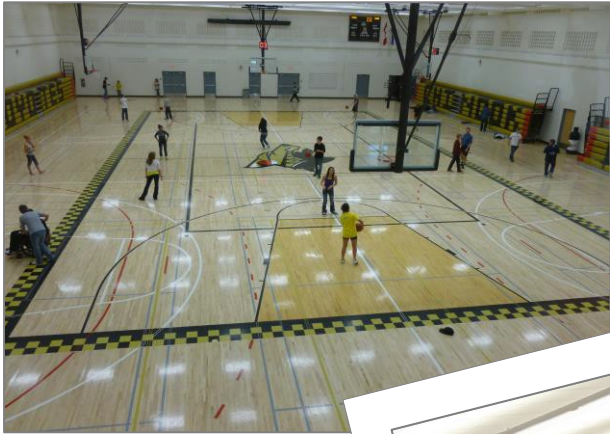


# CHINOOK HIGH SCHOOL



- Our newest high school
- State of the art media centre for presentations and theatre productions
- Many young staff members who love to travel and meet new people.
- University preparation program

# CHINOOK HIGH SCHOOL





# LETHBRIDGE COLLEGIATE INSTITUTE



- Our longest established high school – history of success
- Two gymnasiums, strong athletics and academics, state of the art computer labs, dance academy
- Strong language programs – ELL, German, Spanish, French Immersion, Japanese



# LETHBRIDGE COLLEGIATE INSTITUTE



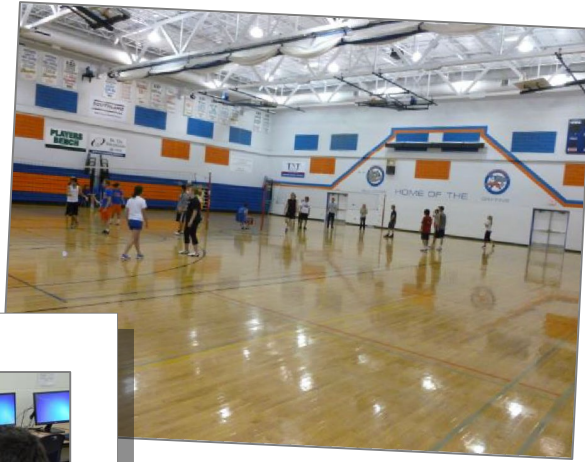
# WINSTON CHURCHILL HIGH



- Excellent academic and co-curricular programs – International Baccalaureate
- Very diverse population of students from many cultures



# WINSTON CHURCHILL HIGH





# IMMANUEL CHRISTIAN HIGH



- Excellent academic and co-curricular programs
- Teach Alberta curriculum from the Christian perspective.
- Small school population with a strong community spirit.

# IMMANUEL CHRISTIAN HIGH



# WHERE WILL MY CHILD LIVE?



- Carefully chosen homestay family – English-speaking family which enjoys teaching others about Canadian culture and enjoys learning about other cultures.
- Within walking distance or bus ride to school.



# WHERE WILL MY CHILD LIVE?

- Single-family house with outdoor space.
- Student will have his or her own bedroom and share the house with the family
- Equipped with WIFI for email and Skype



# WHAT SUPPORTS ARE THERE FOR STUDENTS IN HOMESTAY?

- The Canada Homestay Network's relationship manager works very close with our International Services office
- 24/7 support through CHN
- Very high matching success rate to date



**The Canada Homestay Network**

Bringing international students and Canadian host families together <sup>TM</sup>

# AFFORDABLE QUALITY EDUCATION

## Study Fees and Homestay Fees for Lethbridge School Division 2021-2022:

### Fees for the 2021-2022 school year

Fees payable to Lethbridge School Division:	Half Year of Study (one semester)	Full Year of Study (two semesters)
Application Fee (non-refundable)	\$250*	\$250*
Tuition Fee	\$5500	\$11000
Canadian Medical Insurance Fee (required)	\$275	\$500
Custodian Fees	\$250	\$500

**Tuition Fees Cover:** all mandatory school fees including course fees, locker rental, textbook rental, and student union fees.

**Tuition Fees Do Not Cover:** optional fees such as for a yearbook, activity pass, student portraits, city bus passes, recreational activities and athletic fees (if you choose to participate on a competitive school team), and revalidation / legalization of school marks for those countries that require it.

Refund Policies and Methods of Payment: <https://www.lethsd.ab.ca/departments/international-services/tuition-fees-costs>



Canada Homestay Network  
Services and Fees  
Lethbridge School Division

Program Dates: 9/1/2021 to 6/30/2022 Program Billing  
Cycle: Semester or Year

### Standard Fees

	Base	+\$500 Deposit
Lethbridge SD Homestay fees - 10 months 2021	\$9,375.00	\$9,875.00
Lethbridge SD Homestay fees - 5 months 2021-22	\$4,950.00	\$5,450.00
Lethbridge SD Homestay Fees - 3 months 2021-22	\$3,180.00	\$3,680.00
Lethbridge SD Returning fees - 10 months 2021-22	\$9,125.00	\$9,625.00
Lethbridge SD Returning fees - 5 months 2021-22	\$4,700.00	\$5,200.00

### Standard

Ages 12-13

Ages 14-17

Homestay Services & Regular Meal Plan	\$885.00	\$885.00
Registration & Orientation (>90 nights)	\$450.00	\$450.00
Registration & Orientation (30-90 nights)	\$250.00	\$250.00
Registration & Orientation (1-29 nights)	\$200.00	\$200.00
Security Deposit-Refundable (>3 months)	\$500.00	\$500.00

GST/HST

### Optional Fees

Extra Nights		\$37.00
Airport Pickup and Return Service	Calgary	\$400.00
Underage Fee - Grade 6-8, 12-14 yrs old		\$100.00

### CHN's refund policy will apply to cancellations.

*Note: The Excise Tax Act defines which services and homestay host allowances attract GST or HST. Canada Homestay Network Society is registered to collect and remit GST/HST on certain services, including, but not limited to, (a) Registration, Placement and Orientation fee provided to students registered after their arrival in Canada; (b) Airport transfers; (c) Daily host transportation allowances; and (d) Daily host allowances for students staying in homestay for less than one month.*



# OPTIONS IN LETHBRIDGE SCHOOL DIVISION

Graduate from high school in Lethbridge:

- 1-2 years (if English proficiency is high enough)
- 3 full years in Lethbridge (no ESL entrance exam for University)



# OPTIONS IN LETHBRIDGE SCHOOL DIVISION



Canada Camp is offered by Lethbridge-based Redleaf Phoenix Academy, which specializes in international education tourism. Canada Camp gives youth a wonderful experience of Canadian lifestyle through immersive camp activities and memorable adventures.





Lethbridge  
**SCHOOL DIVISION**

Alberta, Canada