

Lethbridge School District No. 51

The Fun
FACTS
About...



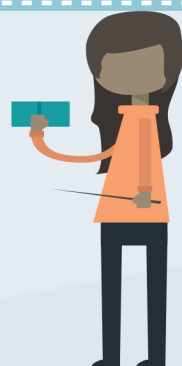
Spending on EDUCATION

2015-2016 School Year

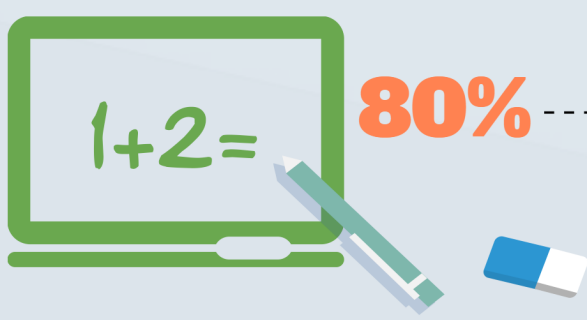
Instruction

84%

of the District Budget is spent on
Instructional activities



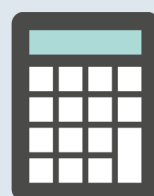
School Based Instruction



80%

88%

STAFFING



RESOURCES

12%



Instructional Support



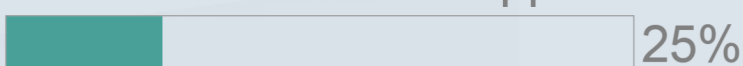
20%

Inclusive Learning Supports



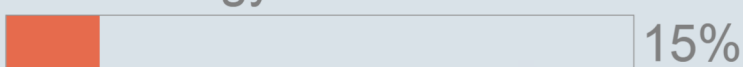
60%

Other Instructional Supports



25%

Technology



15%

Support Services

Services that support
educating a student

16%

of District Budget



Transportation

2%

Transporting
Students to and
from School



Facilities

11%

Caretaking and Facility
Maintenance
Light, Heat and Water
Major facility upgrades



Administration

3%

Office of the
Superintendent
Business and Finance
Human Resources
System Instructional
Support



117 million
budget

10,494 students

9923 FTE (ecs=.5)



Cost to educate a
student in 2015-2016
=\$11,793



\$2.7 million spent
from reserves