

2018  
2021

3YP&AERR

## Lethbridge School District No. 51 Three Year Plan and Annual Education Results Report

# SUMMARY

## Our District Priorities

### District Priority 1: Achievement

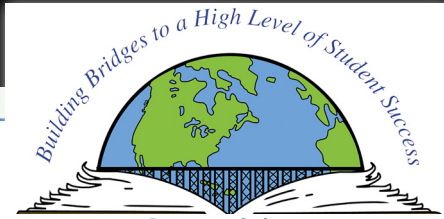
- Build capacity in literacy and numeracy instructional practices and use of assessment across all subject areas to improve student achievement.
- Support staff in implementation of the learning competencies outlined in the new curriculum that develop the knowledge, skills and attitudes for successful learning, living and working, and implement strategies that support school to school and school to work preparation and transition.
- Develop capacity in leadership focusing on instructional leadership.
- Create and implement a Division of Instructional Services work plan, which focuses on wellness for all.
- Garner engagement and support of parents and community partners.

### District Priority 2: Inclusion

- Create positive environments for student growth and development.
- Promote and support the culture of valuing diversity and high expectations for all learners.
- Build the capacity of all staff to demonstrate approaches/strategies that enable all learners to access the Programs of Study.

### District Priority 3: Innovation

- Build a common understanding of the meaning of student success and language for innovation, creativity and critical thinking.
- Build teacher capacity to implement process learning in the classroom at all grade levels and subject areas.
- Build a culture of risk taking as part of everyday practice in teaching and learning.
- Promote and celebrate engaging learning opportunities that support creative and innovative thinking.
- Support the seamless implementation of software that enhances instructional capacity.
- Engage our entire community in digital citizenship.



### Our Vision

Learners are innovative thinkers who are successful, confident, respectful and caring.

### Our Mission

Lethbridge School District No. 51 is inclusive, forward-thinking and accountable for engaging students in quality learning experiences that develop strong foundations, innovative minds and responsible citizens.

## About the District

Twenty-three schools and six alternative school programs.

The District has 1,176 dedicated staff members who serve the needs of approximately 11,500 students.

Located in vibrant city of Lethbridge with just over 98,000 residents.

The District takes pride in the breadth of its programs, the expertise of its staff and the quality of its facilities in 23 schools and a number of outreach facilities throughout the city.

Programs including Apprenticeship, International Student Program, English Second Language program, International Baccalaureate, Advanced Placement, a dual-credit program with the University of Lethbridge and Modern Languages.

Quality fine arts (band, theatre, dance, visual arts) and CTS programs (communication technology, food and clothing studies, trades related pathways).

Community engagement: active School Councils, District School Council, District Student Advisory Council, parent participation on a variety of District committees including the Policy Advisory Committee and the Wellness and Community Engagement committees. Annual Town Hall each February to gather input from all stakeholders.





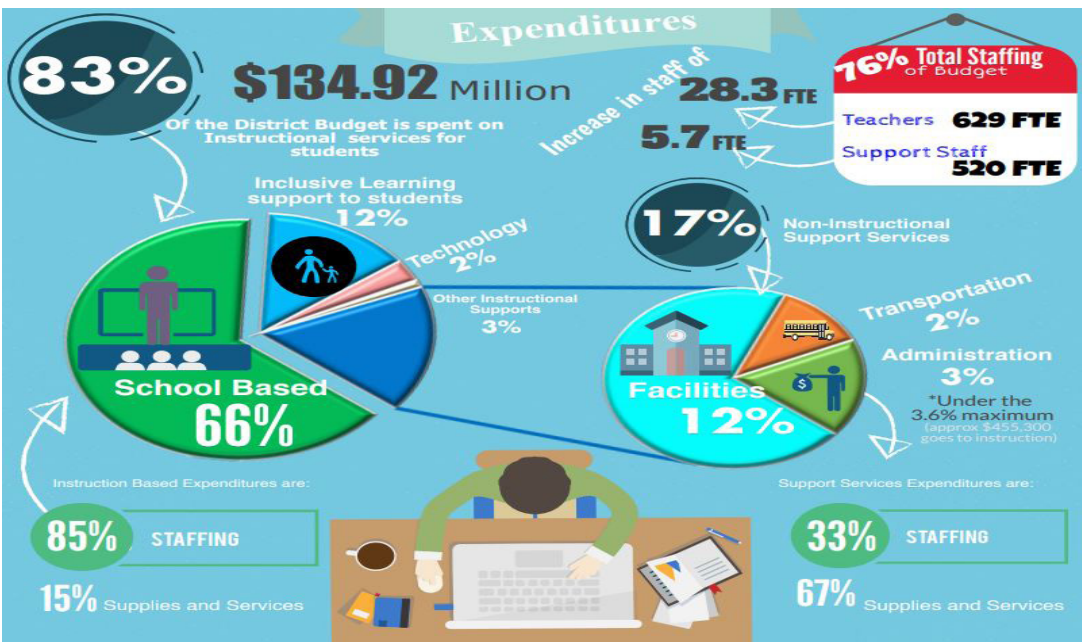
## District Highlights

- Senator Joyce Fairbairn Middle School opened with approximately 470 students on the westside of Lethbridge.
- The Board hosted a town hall for the purpose of gathering public feedback relative to what was going well and what areas could be improved. Over 200 participants contributed ideas using a thought stream process during the event.
- To ensure the District is aligning safety practices to provincial regulations, and to support building a culture of safety for all staff, the District hired an Occupational Health and Safety officer.
- The Board hired a Principal of FNMI Education, and initiated several professional learning opportunities for teachers to enhance their knowledge of FNMI culture and content in their teaching.
- Eleven schools participated in “wellness grants” that focused on universal self-regulation in class.
- Working with The Faculty of Education of The University of Lethbridge, all administrators used an inquiry process for their professional growth plans.
- Full day Kindergarten was offered as a pilot project at Westminster Elementary School.
- A behaviour team provided 2- week residences in schools, building staff understanding of and capacity to deal with challenging behaviours.

## Budget Highlights

The 2018-2019 budget is \$134.92 million.

- Total teaching staff is increased by 28.3 FTE, to bring the total number of teachers to 629 FTE.
- Support staff is currently at 520 FTE, an increase of 5.7 FTE.
- Enrolment was boosted by 228 students, to bring the District’s total to 11,502.
- Total budgeted revenues for 2018-2019 are \$134.92 million. Included in these revenues is approximately \$4.1 million of prior year’s reserves. Total revenues for the District increased by 4.95 per cent over 2017-2018.



## Accountability Pillar

Measure Category	Measure	Lethbridge School Dist No. 51			Alberta			Measure Evaluation		
		Current Result	Prev Year Result	Prev 3 Year Average	Current Result	Prev Year Result	Prev 3 Year Average	Achievement	Improvement	Overall
Safe and Caring Schools	Safe and Caring	87.8	88.6	88.7	89.0	89.5	89.4	High	Declined	Acceptable
Student Learning Opportunities	Program of Studies	84.0	84.2	84.4	81.8	81.9	81.7	Very High	Maintained	Excellent
	Education Quality	89.1	89.2	89.0	90.0	90.1	89.9	High	Maintained	Good
	Drop Out Rate	4.5	4.3	4.6	2.3	3.0	3.3	Intermediate	Maintained	Acceptable
	High School Completion Rate (3 yr)	68.3	72.5	70.4	78.0	78.0	77.0	Intermediate	Maintained	Acceptable
Student Learning Achievement (Grades K-9)	PAT: Acceptable	72.4	71.2	70.3	73.6	73.4	73.3	Intermediate	Improved	Good
	PAT: Excellence	18.4	17.5	17.8	19.9	19.5	19.2	Intermediate	Maintained	Acceptable
Student Learning Achievement (Grades 10-12)	Diploma: Acceptable	80.5	80.7	81.5	83.7	83.0	83.0	Intermediate	Maintained	Acceptable
	Diploma: Excellence	17.3	16.6	16.2	24.2	22.2	21.7	Intermediate	Maintained	Acceptable
	Diploma Exam Participation Rate (4+ Exams)	42.6	46.1	43.8	55.7	54.9	54.7	Low	Maintained	Issue
	Rutherford Scholarship Eligibility Rate	56.9	56.8	55.0	63.4	62.3	61.5	n/a	Maintained	n/a
Preparation for Lifelong Learning, World of Work, Citizenship	Transition Rate (6 yr)	55.8	57.1	56.6	58.7	57.9	59.0	Intermediate	Maintained	Acceptable
	Work Preparation	77.5	79.0	79.9	82.4	82.7	82.4	Intermediate	Declined	Issue
	Citizenship	79.1	81.0	80.9	83.0	83.7	83.7	High	Declined Significantly	Issue
Parental Involvement	Parental Involvement	76.7	79.5	78.2	81.2	81.2	81.0	Intermediate	Maintained	Acceptable
Continuous Improvement	School Improvement	76.0	79.7	79.2	80.3	81.4	80.7	Intermediate	Declined Significantly	Issue

Find a link to the full report here: [AERR](#)