

2017  
2020

3YP&AERR

## Lethbridge School District No. 51 Three Year Plan and Annual Education Results Report

# SUMMARY

## Our District Priorities

### District Priority 1: Supporting Student Achievement and Closing the Achievement Gap

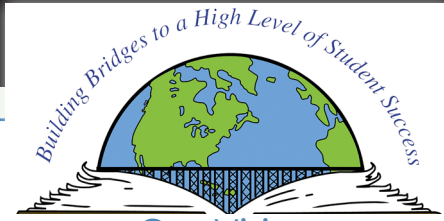
- Build capacity in literacy and numeracy instructional practices across all subjects to improve student achievement.
- Support staff in the implementation of student learning opportunities that build soft skills associated with future success (e.g. communication, work ethic, collaboration, initiative, leadership, organization, decision-making, critical thinking).
- Implement strategies that support the areas of focus identified by each high school under the umbrella of High School Redesign
- Implement strategies that support school-to-school and school-to-work preparation and transition
- Implement the First Nations Metis Inuit Strategic Plan

### District Priority 2: Supporting the Implementation of Initiatives designed to Develop Innovative Thinkers

- Build a common understanding of the meaning of student success and language for innovation, creativity, and critical thinking
- Build capacity to implement process learning in the classroom at all grade levels/subject areas
- Use The Learning Technology Policy Framework as the impetus for the development of a technology learning plan
- Enhance Community Engagement

### District Priority 3: Supporting Student Diversity

- Ensure vision and subsequent implementation of the Division of Instructional Services work plan focuses on Wellness for all
- Realign Wellness Services to support our School Community
- Build capacity in administrators and teachers to value diversity and demonstrate strategies that develop an increasingly inclusive school environment.



### Our Vision

Learners are innovative thinkers who are successful, confident, respectful and caring.

### Our Mission

Lethbridge School District No. 51 is inclusive, forward-thinking and accountable for engaging students in quality learning experiences that develop strong foundations, innovative minds and responsible citizens.

## About the District

Twenty-two schools and six alternative school programs.

Approximately 1,044 dedicated staff members who serve the needs of over 11,200 students.

Located in vibrant city of Lethbridge with just under 99,000 residents.

Breadth of programs include French Immersion K-12, Montessori (elementary), secondary Knowledge and Employability pathway, off-campus, Early Education Programs, Spanish Bilingual program and an Arabic Language and Islamic Culture Elective course.

Programs including Apprenticeship, International Student Program, English Second Language program, International Baccalaureate, Advanced Placement, a dual-credit program with the University of Lethbridge and Modern Languages.

Quality fine arts (band, theatre, dance, visual arts) and CTS programs (communication technology, food and clothing studies, trades related pathways).

Community engagement: active School Councils, District School Council, District Student Advisory Council, parent participation on a variety of District committees including the Policy Advisory Committee and the Wellness and Community Engagement committees. Annual Town Hall each February to gather input from all stakeholders.





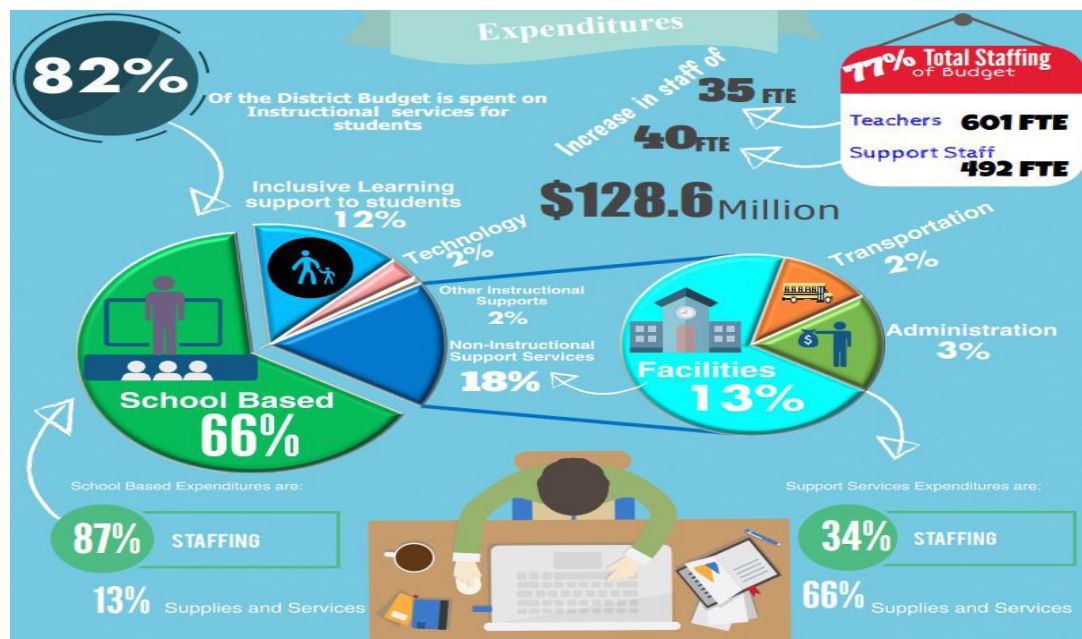
## District Highlights

- The Board hosted a Town Hall with stakeholders representing students, parents, staff, and community members
- Coalbanks Elementary School, opened on the west side; major modernization of Wilson Middle School complete.
- A District Literacy Work Plan launched; over \$120,000 was invested by the Board to support literacy resources within the plan.
- Evergreening of elementary school technology was completed.
- At the high school level, engaged students in over 1,100 courses in Work Experience and the Registered Apprenticeship Program).
- The District Leadership Team commenced work with the University of Lethbridge on a project designed to build capacity in generative leadership practices.
- A Spanish Bilingual program was launched as well as an Arabic Language and Culture option at the elementary level
- Dual credit programming between LCI and the U of L continues with further dual credit planning in progress at the District level

## Budget Highlights

The 2017-2018 budget is \$128.6 million.

- Total teaching staff is increased by 35 FTE, to bring the total number of teachers to 601 FTE.
- Support staff is currently at 492 FTE, an increase of 40 FTE.
- Enrolment was boosted by 627 students, to bring the District's total to 11,274.
- One-time reserves have been allocated to Board and school priorities such as supporting student learning needs and literacy assessment at elementary schools, school based resources, furniture and equipment, and costs to start-up the new middle school in west Lethbridge.



## Accountability Pillar

Measure Category	Measure	Lethbridge School Dist No. 51			Alberta			Measure Evaluation		
		Current Result	Prev Year Result	Prev 3 Year Average	Current Result	Prev Year Result	Prev 3 Year Average	Achievement	Improvement	Overall
Safe and Caring Schools	Safe and Caring	88.6	88.7	88.5	89.5	89.5	89.3	Very High	Maintained	Excellent
Student Learning Opportunities	Program of Studies	84.2	85.0	84.7	81.9	81.9	81.5	Very High	Maintained	Excellent
	Education Quality	89.2	88.7	89.0	90.1	90.1	89.6	High	Maintained	Good
	Drop Out Rate	4.3	4.6	4.8	3.0	3.2	3.3	Intermediate	Maintained	Acceptable
	High School Completion Rate (3 yr)	72.5	69.9	69.2	77.9	76.5	76.1	Intermediate	Improved	Good
Student Learning Achievement (Grades K-9)	PAT: Acceptable	71.2	69.6	70.2	73.4	73.6	73.2	Intermediate	Maintained	Acceptable
	PAT: Excellence	17.5	18.3	17.2	19.5	19.4	18.8	Intermediate	Maintained	Acceptable
Student Learning Achievement (Grades 10-12)	Diploma: Acceptable	80.7	80.2	82.3	83.0	82.7	83.1	Intermediate	Maintained	Acceptable
	Diploma: Excellence	16.6	15.7	16.0	22.2	21.2	21.5	Intermediate	Maintained	Acceptable
	Diploma Exam Participation Rate (4+ Exams)	46.1	43.4	43.3	54.9	54.6	53.1	Intermediate	Improved	Good
	Rutherford Scholarship Eligibility Rate	56.8	53.2	53.2	62.3	60.8	60.8	n/a	Improved	n/a
Preparation for Lifelong Learning, World of Work, Citizenship	Transition Rate (6 yr)	57.1	57.2	57.2	57.9	59.4	59.3	High	Maintained	Good
	Work Preparation	79.0	80.1	79.6	82.7	82.6	81.9	High	Maintained	Good
	Citizenship	81.0	81.4	80.7	83.7	83.9	83.6	High	Maintained	Good
Parental Involvement	Parental Involvement	79.5	79.0	78.4	81.2	80.9	80.7	High	Maintained	Good
Continuous Improvement	School Improvement	79.7	79.8	78.9	81.4	81.2	80.2	High	Maintained	Good

Find a link to the full report here: <http://www.lethsd.ab.ca/documents/general/AERR%20November%2028%202017%20FINAL.pdf>