

Vision:

Learners are innovative thinkers who are successful, confident, respectful, and caring.

Mission:

Lethbridge School Division is inclusive, forward thinking, and accountable for engaging students in quality learning experiences that develop strong foundations, innovative minds, and responsible citizens.

Domain: Local and Societal Context

Planning considered:

Pandemic Context, Population Diversity, Health and Wellness, Inclusive Education, Curriculum, Technology, Growth, Staff Demographics

Domain: Governance Outcomes

Governors engage students and their families, staff and community members in the creation and ongoing implementation of a shared vision for student success.

Legislation, policy and regulation provides clarity regarding the roles and responsibilities of education in matters of governance.

Fiscal resources are allocated and managed in the interests of ensuring student success, in alignment with system goals and priorities, and in accordance with all statutory, regulatory and disclosure requirements.

Curriculum is clearly articulated and implemented in a relevant and meaningful manner.

Governors employ a cycle of evidence-based continuous improvement to inform ongoing planning and priority setting, and to build capacity.

Domain: Student Growth and Achievement Outcomes

Students achieve prescribed provincial learning outcomes, demonstrating strengths in literacy and numeracy.

Students apply knowledge, understanding and skills in real-life contexts and situations.

Students advance reconciliation by acquiring and applying foundational knowledge of Indigenous experiences. The school community applies the resources needed to support Indigenous student achievement.

Students are active, healthy and well.

Students use ongoing assessment feedback to reflect continuously on their progress, identify strengths and areas of need and set new learning goals.

Domain: Teaching and Learning Outcomes

Teachers and leaders respond with skill and competence to the unique learning needs, interests and cultural, social and economic circumstances of all.

Teachers and leaders improve their professional practice through collaborative engagement in processes of growth, supervision and evaluation.

Collaboration amongst teachers, leaders, students and their families, and other professionals, enables optimum learning.

Professional Learning programs prepare teachers and leaders to meet the standards of professional practice.

Teachers and leaders use a range of data arising from their practices to inform cycles of evidence-based continuous learning.

2021
2022

ASSURANCE PLAN SUMMARY

Domain: Learning Supports Outcomes

Learning environments are welcoming, caring, respectful and safe.

Learning environments are adapted as necessary to meet learner needs, emphasizing a sense of belonging and high expectations for all.

Education partners fulfill their respective roles with a shared understanding of an inclusive education system.

Students and their families work in collaboration with education partners to support learning.

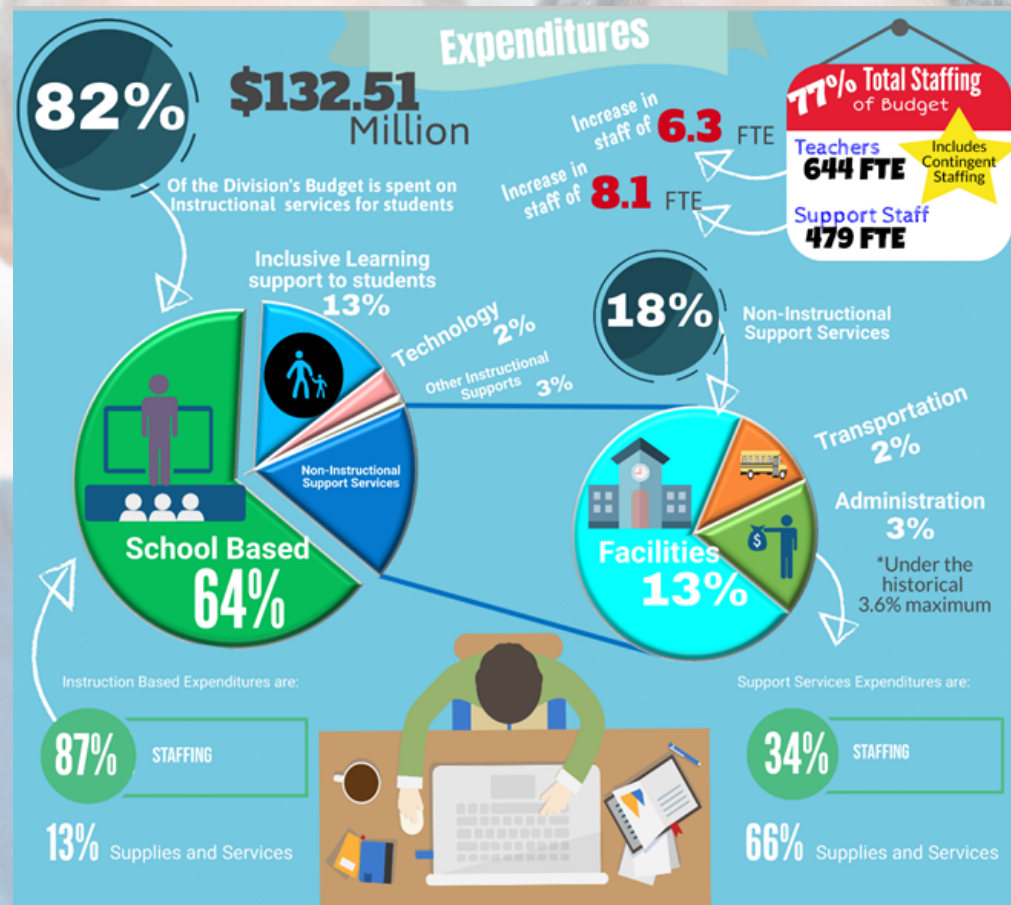
Cross-ministry initiatives and wraparound services enhance conditions required for optimal learning.

Infrastructure (technology and transportation services) supports learning and meets the needs of Alberta students and their families, staff and communities.

About the Division

The Division educates approximately 11,400 early learning through grade 12 students within the city of Lethbridge and employs 709 full time equivalent (FTE) certificated staff and 568 FTE support staff.

All schools provide instruction in the core subjects (language arts, mathematics, social studies and science), physical education, and the fine arts. Students at each school have access to learning commons that provide a blend of print materials and access to state-of-the-art computers and digital resources. French language instruction is offered in grades four through twelve and a French Immersion/French Bilingual program is available for students from kindergarten through Grade 12. A Spanish Bilingual program is in place at Coalbanks Elementary School. It currently spans Kindergarten to Grade 4 and will continue to grow up to Grade 5 with a grade added each year.



Budget Highlights

Lethbridge School Division has a total operating budget of \$132.51 million.

- There was an increase of 6.3 FTE teaching staff from the prior year
- There was an increase of 8.1 FTE support staff from the prior year
- Total budgeted revenues for 2021/2022 are \$135.51 million. Included in these revues is approximately \$2.64 million of prior year's reserves.

FIND A LINK TO THE FULL ASSURANCE PLAN HERE: ASSURANCE

A LINK TO THE FINANCIAL AND PRERFORMANCE MEASURES DASHBOARDS CAN BE FOUND HERE: DASHBOARDS